

GCSE (9–1) Music

J536/03, 04 Practical component

Sample Composition Briefs

Version 1.1

INSTRUCTIONS FOR CANDIDATES

- Decide on a brief that relates to an Area of Study of your choice.
- Select a stimulus to use as the starting point for your composition from **one** of the following options:
 1. Note pattern
 2. Note pattern
 3. Rhythmic phrase
 4. Rhythmic phrase
 5. A short story
 6. An image
 7. A set of words
 8. A chord sequence
- You will find that some of the stimuli are better suited to certain Areas of Study, but there is no restriction on which stimuli you may use with which brief.
- The complete stimulus must be used in your piece. You are expected to develop and extend the given stimulus.
- Your composition is to be submitted as a recording. This is to be accompanied by a score, an annotated lead sheet or written account of the piece. An ICT produced piece can be submitted with an annotated colour screen shot in place of a score.
- The piece can be for any combination of instruments and/or voices.
- Group compositions are not permitted.
- Where relevant, the stimulus may be transposed.

INFORMATION FOR CANDIDATES

- The total number of marks available for this paper is **30**.
- This document consists of **8** pages. Any blank pages are indicated.

Choose **one** of the following composition briefs:

Area of Study 2: The Concerto Through Time

- Create a melodic solo and accompaniment composition, suitable for presentation at a Performing Arts Showcase evening.

Area of Study 3: Rhythms of the World

- Create a composition (melodic and/or rhythmic) that suggests a world style that you have learnt about. Your composition should be suitable for playback on a student run radio station.

Area of Study 4: Film Music

- Create a descriptive composition suggested by the theme of the storyline or image that would be suitable for accompanying a short film to be shown at a film festival.

Area of Study 5: Convention of Pop

- Create a rock or pop style song, or piece, suitable for performance at an informal gig or concert.

Having chosen an Area of Study brief, now choose **one** of the following stimuli to use as a starting point for your composition:

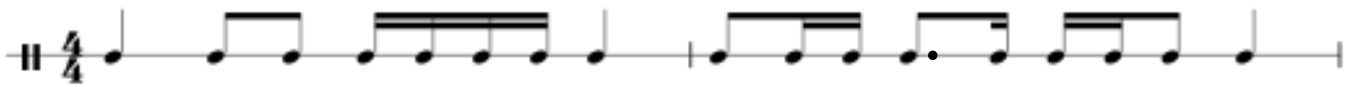
1 **Note pattern**



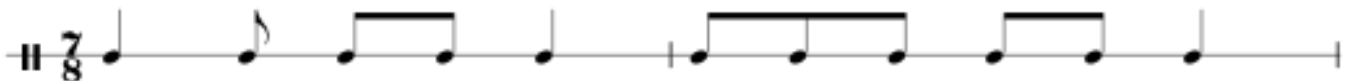
2 **Note pattern**



3 **Rhythmic phrase**



4 **Rhythmic phrase**



5 A short story

The thief breaks into the mansion in the middle of the cold dark night. Unfortunately for him, he is noticed...

6 An Image

This image depicts waves on a stormy sea breaking over rocks.



7 A set of words

Do not let time cheat us then,
Kiss me often and again.

Every time a moment slips,
Let us count it on our lips.

(Adapted from *Cheating Time*, a poem by Ella Wheeler Wilcox)

8 A chord sequence

The image displays a musical staff in G major (one sharp) with a treble clef. Above the staff, four guitar chord diagrams are shown, each with its name above it: G, Em, Am, and D. Below the staff, the corresponding chord voicings are written as block chords on the five-line staff. The G chord is on the 3rd fret, Em is on the 4th fret, Am is on the 5th fret, and D is on the 2nd fret. The notes for each chord are: G (G4, B4, D5), Em (E4, G4, B4), Am (A3, C4, E4), and D (D4, F#4, A4).

BLANK PAGE

Summary of updates

Date	Version	Details
September 2021	1.1	Updated copyright acknowledgements.

Copyright Information:

Stimuli 6: Photo of crashing sea: © Lemonakis Antonis. Image supplied by Shutterstock, www.shutterstock.com

Stimuli 7: Adapted from Yesterdays. By Ella Wheeler Wilcox. London: Gay & Hancock, 1916.

OCR is committed to seeking permission to reproduce all third-party content that it uses in the assessment materials. OCR has attempted to identify and contact all copyright holders whose work is used in this paper. To avoid the issue of disclosure of answer-related information to candidates, all copyright acknowledgements are reproduced in the OCR Copyright Acknowledgements booklet. This is produced for each series of examinations and is freely available to download from our public website (www.ocr.org.uk) after the live examination series.

If OCR has unwittingly failed to correctly acknowledge or clear any third-party content in this assessment material, OCR will be happy to correct its mistake at the earliest possible opportunity.

For queries or further information please contact the Copyright Team, The Triangle Building, Shaftesbury Road, Cambridge, CB2 8EA.

OCR is part of the Cambridge Assessment Group; Cambridge Assessment is the brand name of University of Cambridge Local Examinations Syndicate (UCLES), which is itself a department of the University of Cambridge.