

FAQs for Level 3 Cambridge Technicals in IT

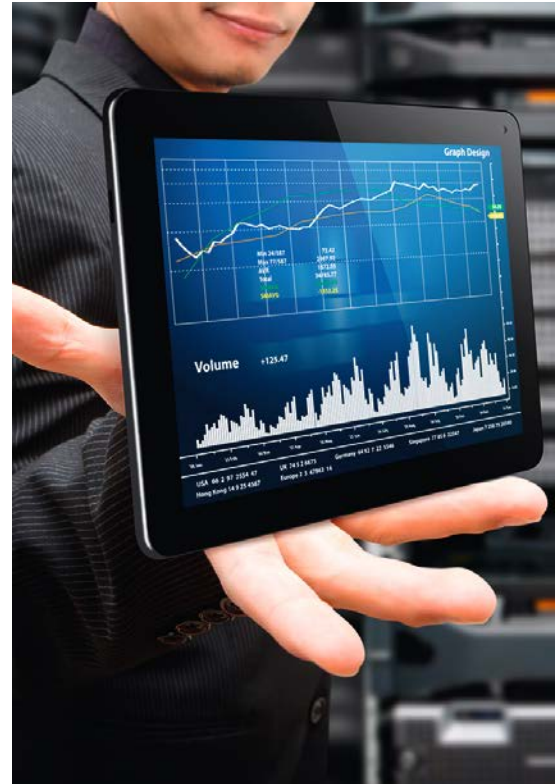
Externally Assessed Units

The Level 3 Cambridge Technicals in IT currently contains 4 externally assessed units:

Unit 1 – Fundamentals of IT (All qualification sizes)

- 90glh unit
- 1 hour 30 minutes exam
- 80 marks
- Part A – approx. 18-20% multiple choice. Part B short answer questions (no more than 10 marks per question)
- Available in both January and June series
- It will be paper based

LO weightings:	
LO1	10-20%
LO2	10-20%
LO3	25-35%
LO4	5-15%
LO5	10-20%



Unit 2 – Global Information (All qualification sizes)

- 90glh unit
- 1 hour 30 minutes exam
- 80 marks
- Part A short-answer questions based on pre-release research brief (42 marks). Part B short-answer questions not based on the case study (38 marks). (Maximum 10 marks per question)
- Pre-release approx. 6-8 weeks prior to the exam.
- A clean copy of this pre-release material will be given to learners with the question paper (no notes)
- Available in both January and June series
- It will be paper based

LO weightings:	
LO1	10-20%
LO2	25-35 %
LO3	10-20%
LO4	15-25%
LO5	0-10%
LO6	10-20%

Unit 3 – Cyber Security

(Applied General Certificate and Extended Certificate Tech level Diploma) and Extended Diploma only)

- 60glh unit
- 1 hour exam
- 60 marks
- Part A short-answer questions based on pre-release research brief (40marks). Part B short-answer questions not based on the case study, (20 marks). (Maximum 8 marks per question)
- Pre-release approx. 6-8 weeks prior to the exam.
- A clean copy of this pre-release material will be given to learners with the question paper (no notes)
- Available in both January and June series
- It will be paper based

LO weightings:	
LO1	5-15%
LO2	35-45%
LO3	20-30%
LO4	10-20%

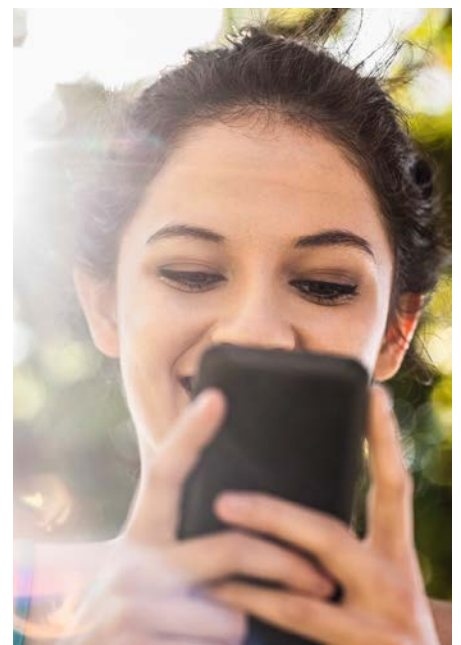
Extended Diploma update:

1 further examined unit has been developed for the Extended Diploma qualification; working title is:

Unit CC – Cloud Technologies (Tech Level Extended Diplomas only)

- 90glh unit
- 1 hour 30 minutes exam
- Content mapped to CompTIA Cloud Essentials and Cisco Cloud Fundamentals
- 70 marks from 70 multiple-choice questions
- Available in both January and June series, but first sitting June 2017
- It will be computer based

LO weightings:	
LO1	17 - 21%
LO2	14 - 17%
LO3	24 - 30%
LO4	8 - 10%
LO5	13 - 16%
LO6	3 - 4%
LO7	4 - 5%



Examined content:

In all externally assessed units you should be aware that:

- A direct question can be asked about any content in the unit that follows an i.e.
- However, a direct question may not be asked about any content that follows an e.g. and students are able to use their own examples.

Exam dates:

Exam timetables will be published here:

www.ocr.org.uk/i-want-to/key-dates-and-timetables/

Pass mark / grade boundaries:

All externally assessed units must be passed in order to achieve the full qualification.

The first examination series for Cambridge Technicals takes place January 2017. Once marking has taken place all marks will be attributed a unit grade of Pass, Merit or Distinction, depending on the candidate's achieved mark out of the total marks for the question paper, for example XX/80 marks. The boundaries for this conversion will not be known until the first series has gone through a full awarding process.

Resits:

Students are able to have one resit opportunity for each externally assessed unit. If a student fails their re-sit attempt we will issue an unclassified for the full qualification.

However, students are able to re-enter for the full qualification.

Results:

Your students' outcome grade will be distributed to centres in:

- January series – March
- May/June series - August



Resources to support external assessment:

On each qualification page you'll find a variety of support materials for each externally assessed unit.

- Sample Assessment Material (SAM)
- Unit Delivery Guides
- Lesson Elements
- Resource Links

Once we've gone through our first live series we'll be able to start producing additional support materials:

- Examiner Report (on results day)
- Past Paper and Mark Scheme (on results day)
- Past Paper and Mark Scheme with Commentary (to follow)

Mandatory Assessed Units

In the Introductory Diploma, Foundation Diploma and Diploma there is a mandatory pathway unit that is only available for the pathway:

IT Infrastructure Technician Pathway

Unit 4 Computer Networks

Emerging Digital Technology Practitioner Pathway

Unit 5 Virtual and Augmented Reality

Application Developer Pathway

Unit 6 Application Design

Data Analyst Pathway

Unit 7 Data Analysis and Design

These units should be attempted at the end of the period of study as they are synoptically linked to all of the units in that pathway. There is a Model Assignment attached to each of these units. The scenario can be changed to reflect local context, but the assessments must remain the same.

In the Extended Diploma (1080glh) there are 2 mandatory units per pathway:

Digital Technician Pathway

Unit 4 Computer networks

Unit 5 Virtual and Augmented Reality

Application Data Technician Pathway

Unit 6 Application Design

Unit 7 Data Analysis and Design

Internally Assessed Units

The choice of internally assessed units will depend on the size of qualification or pathway your student is undertaking. Please refer to the Centre Handbook for more information.

Each internally assessed unit within the qualification must be passed in order for your students to achieve the full qualification.

Evidence:

Internally assessed units can be evidenced via whatever format the centre/learner deems suitable unless a specific format is stated in the Assessment Guidance section of the unit, or as indicated by the wording of the assessment criterion e.g. create a plan

Holistic delivery:

Where possible, we would recommend you consider a holistic approach to delivery and assessment, covering a range of units/Learning Outcomes/Assessment Criteria through a task or project.

We will provide a project approach to delivery resource to help facilitate this.

Meaningful Employer Involvement (MEI)

Where possible, centres should engage employers in the delivery and assessment of the units and record how/when this occurred.

This can include work placements, guest lecturers etc. Ideas for Meaningful Employer Involvement are given in each of the unit documents.

MEI is a mandatory requirement for qualifications submitted to the DfE in the Tech Level category.

It's a good idea to read our MEI page on the website.

Synoptic learning and assessment:

Centres should consider synoptic learning and assessment during the delivery and assessment of the qualification. Each unit document highlights where opportunities are for synoptic learning/assessment.

Synoptically assessed mandatory unit (Extended Diploma 1080GLH only)

Unit 24 Enterprise computing

This unit is only available in the Extended Diploma; it is mandatory and internally assessed.

This unit should be assessed towards the end of your student's study programme and it's strongly recommended that centres use the Model Assignment to assess the unit.

Unit 24 Enterprise Computing will enable your students to draw on the skills, knowledge and understanding acquired through all the other units in their chosen pathway.

A Model Assignment is available for this unit.

Resources to support internal assessment:

We've produced a range of teaching and delivery resources for the qualifications including:

- Delivery Guides
- Lesson Elements
- Resource Links
- Project Delivery Approach

Our Guide to Resources will provide you details of all the materials to support Cambridge Technicals:

www.ocr.org.uk/images/275035-a-guide-to-resources.pdf

Text Books:

Hodder Education is developing a text book specifically for the Cambridge Technicals in IT which will be available in August 2016.

Resources to support internal assessment:

We have a number of resources to support the assessment of internal units:

- Model Assignments
- Command Verbs Definitions
- Unit Recording Sheets
- Witness statement
- Candidate Authentication

Model Assignments

We are in the process of creating a model assignment (MA) for each mandatory unit within the specification. These can be found on the subject page:

You don't have to use the MA if you don't want to, or you could opt to change it to meet your local area needs. There's detail in the MA and Centre Handbook about this.

Or you could create your own MA for you students to use.

If you'd like us to check your MA for you we can do that too. There's a charge for this optional service and can found on our CPD Hub:

www.cpdhub.ocr.org.uk/DesktopDefault.aspx?e=fjefcbdbhgnidcponia&CATN_ID=3

Unit Recording Sheets

Each unit has a Unit Recording Sheet that must be used to record the assessment decisions of your students. These must be included with the students' portfolio of evidence.

Command Verbs Definitions

This will help you and your students gain a better understanding of the command verb in the Assessment Criteria.

Both of these support resources can be found on the Internal Assessment section of the qualification page.

Internal Standardisation:

To help you and colleagues with internal standardisation it's a good idea to read our generic guide.

There's also more information about Internal Standardisation in the Cambridge Technicals Centre Handbook.



Administration processes:

You should read the Centre Handbook in order to assist with the administration of the Cambridge Technicals:

We also have a range of support materials and training to support you.

Moderation:

You'll receive two free visits per subject area per academic year. If required, you may request additional moderation visits – these will be charged at the standard visit fee, as described in the OCR Fees List.

If your students require their Cambridge Technical results in time for university entrance or to coincide with GCSE results release, we strongly recommend the latest date for a moderation visit is 30 June. To make sure your moderation visit is completed by this date please book it by 1 June.

Please note that your moderation visit cannot take place between the last two weeks of August.

It's a good idea to

1. Watch the Internal Assessment video:
www.cpdhub.ocr.org.uk/DesktopDefault.aspx?e=eeefkacmhhipblncfgpfbpepipilgfojgcdoedcbkofjonlkjl
2. Attend our Live Webinar Training for Internal and External Assessment Processes/Administration – please see the CPD hub for further detail.
3. Read our PowerPoint slides to support the training.

These will help you understand the moderation process and how it works.

As Cambridge Technicals uses moderation visits rather than a purely external quality assurance model, all students that you want certification for at a visit must be in a 'claim' on OCR Interchange. There is not Accredited Centre Status/Direct Claim Status available so all learners (that you want certification for at that point) must be submitted in a claim in advance of the moderation visit. Details of the certification claims process can be found on our [website](#).

Re-submission of internally assessed units:

After the result for an internally assessed unit has been confirmed, your students are still able to resubmit the unit again at a higher grade (once further or revised work has been produced for the unit). This would require a new claim for the unit at a later moderation visit but will not require a new entry nor attract an additional fee. The system will no longer prevent resubmitting an internally assessed unit that has already been claimed.

When allowing students to revise work for resubmission after certification, the guidelines on feedback in Section 8 of the centre handbook should still be applied.

To find out more <http://www.ocr.org.uk/cambridgetechnicals>
call our Customer Contact Centre on **02476 851509**
Alternatively, you can email us on vocational.qualifications@ocr.org.uk