

A Level Geology

H414/03 Practical skills in geology

Sample Insert

Date – Morning/Afternoon

Time allowed: 1 hour 30 minutes



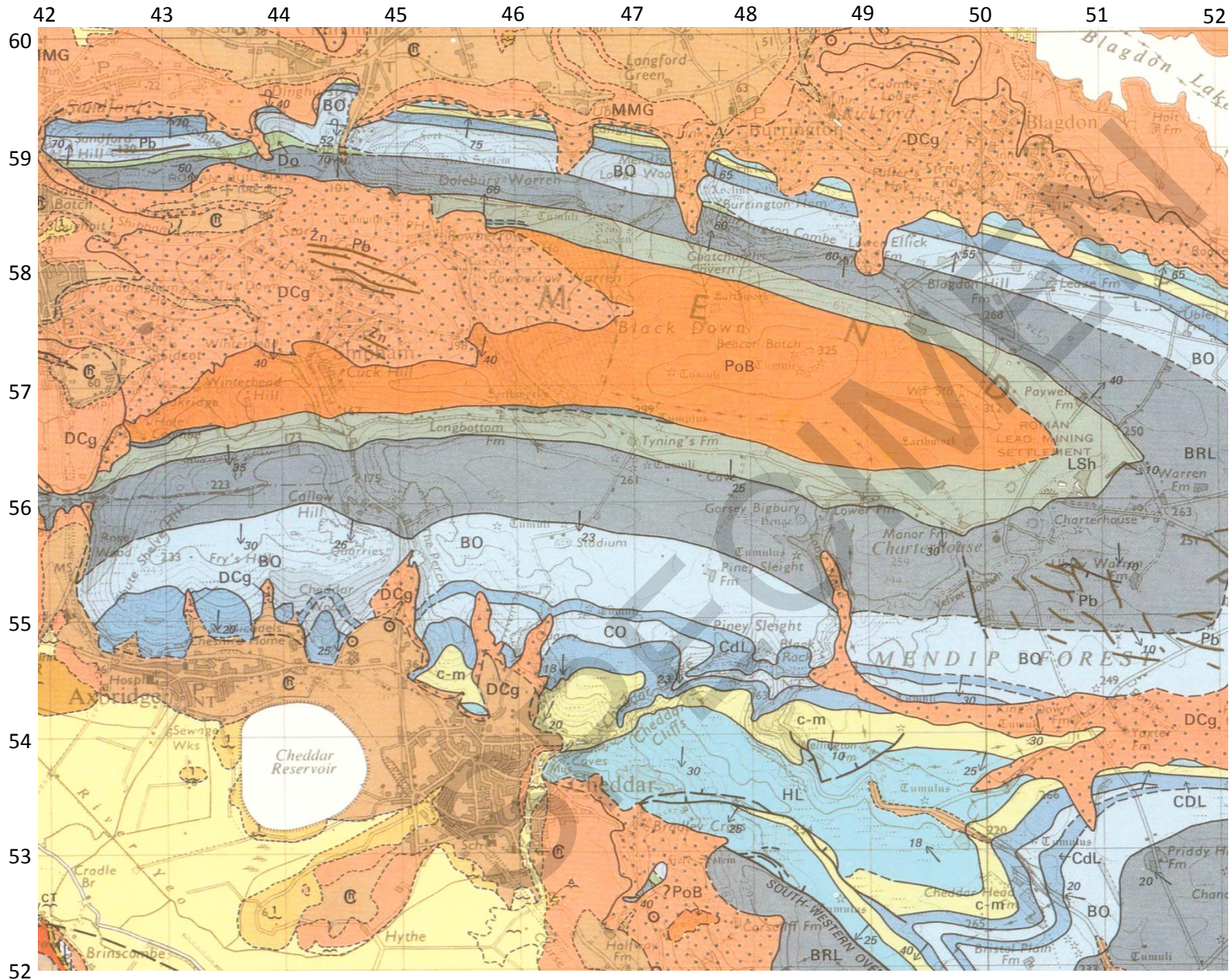
INSTRUCTIONS TO EXAMS OFFICER/ INVIGILATOR

- Do not send this Insert for marking; it should be retained in the centre or recycled.
- Please contact OCR Copyright should you wish to re-use this document.

INFORMATION

- This insert contains the map excerpt.
- This document consists of 4 pages.

Information on this page is required to answer question 5.



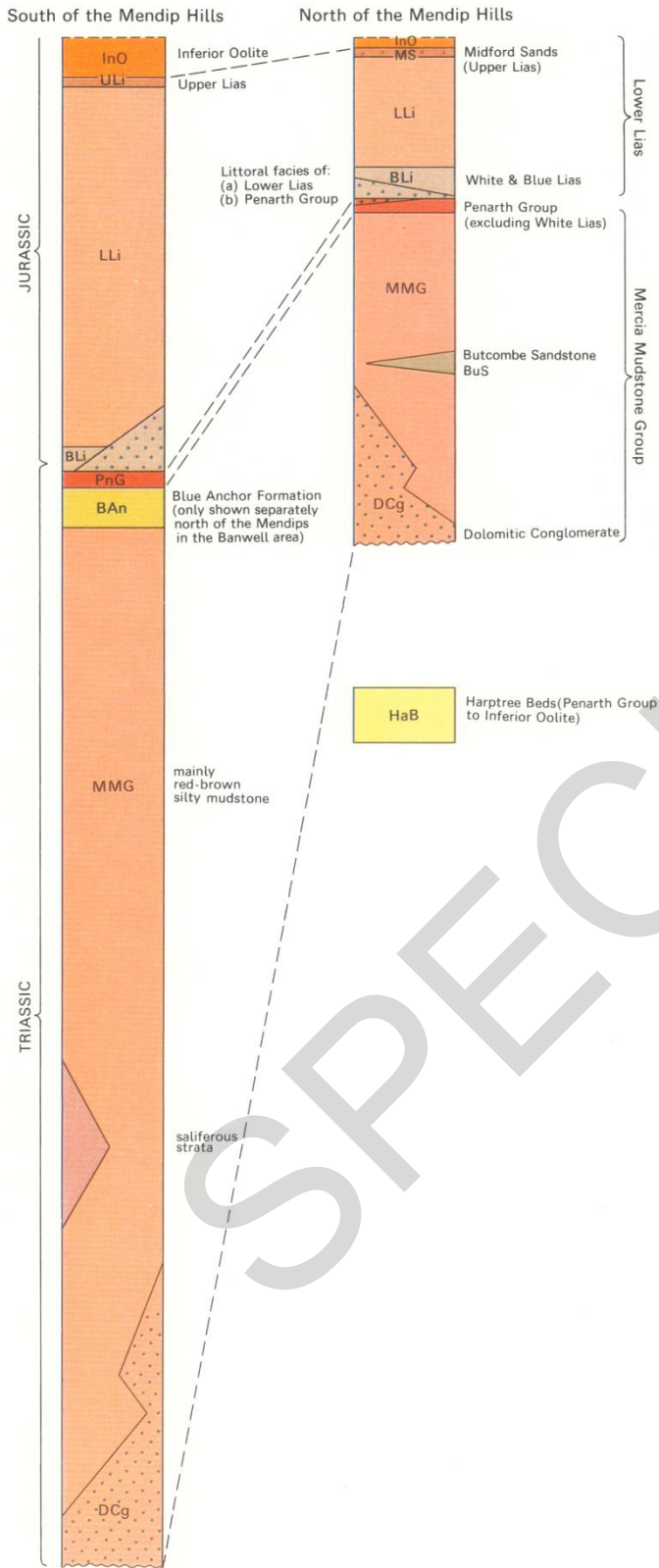
EXPLANATION OF GEOLOGICAL SYMBOLS

	Inclined strata, dip in degrees
	Vertical strata, long bar indicates strike
	Overtuned strata, dip in degrees
	Geological boundary, drift
	Geological boundary, solid
	Coal-crop
	Coal-crop on sub-Triassic surface (assumed position)
	Fault at surface, crossmark indicates downthrow side
	Fault on sub-Triassic surface (assumed position), crossmark indicates downthrow side
	Mineral vein or mineralised fault belt, Pb lead, Zn zinc, Fe iron
	Marine band
Broken lines denote uncertainty	
	Borehole
	Borehole from underground workings
	Pit or mineshaft, abandoned
Abbreviations:	
F	Fault
RSF	Radstock slide fault
SST	Sandstone



**GENERALIZED VERTICAL SECTION
& KEY TO SOLID SYMBOLS & COLOURS
(ENLARGED FOR MESOZOIC STRATA)**

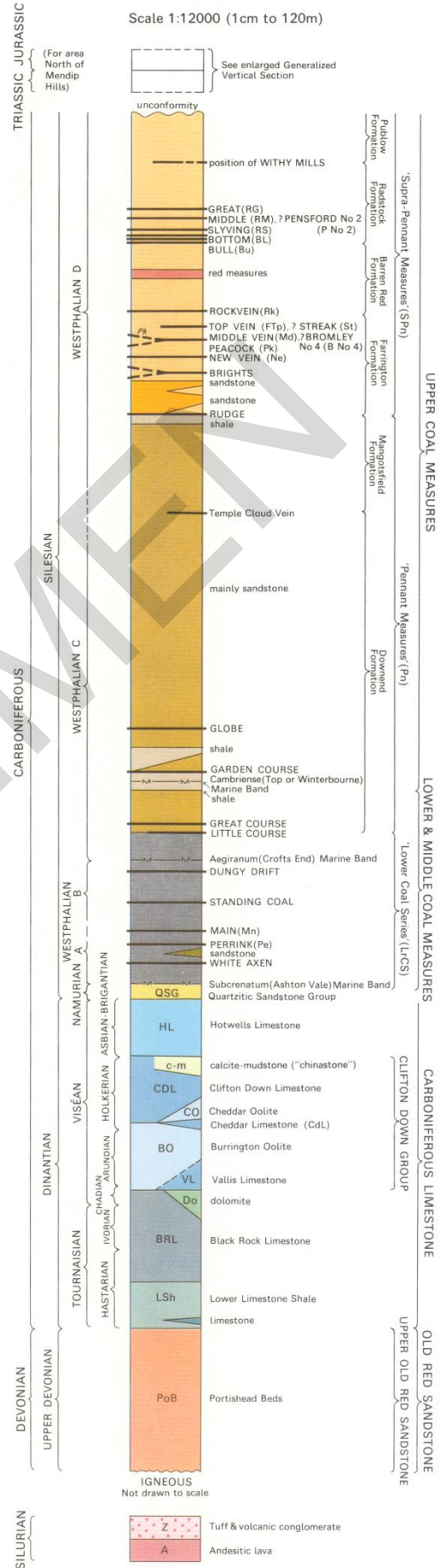
Scale 1:2000 (1cm to 20m)



END OF MAP EXCERPT

**GENERALIZED VERTICAL SECTION
& KEY TO COLOURS & SYMBOLS
FOR PALAEOZOIC ROCKS**

Scale 1:12000 (1cm to 120m)



SPECIMEN

Copyright Information:

Reproduced by permission of Ordnance Survey on behalf of HMSO © Crown Copyright 1984. All rights reserved. Ordnance Survey licence number 100043707.

OCR is committed to seeking permission to reproduce all third-party content that it uses in the assessment materials. OCR has attempted to identify and contact all copyright holders whose work is used in this paper. To avoid the issue of disclosure of answer-related information to candidates, all copyright acknowledgements are reproduced in the OCR Copyright Acknowledgements booklet. This is produced for each series of examinations and is freely available to download from our public website (www.ocr.org.uk) after the live examination series.

If OCR has unwittingly failed to correctly acknowledge or clear any third-party content in this assessment material, OCR will be happy to correct its mistake at the earliest possible opportunity.

For queries or further information please contact the Copyright Team, First Floor, 9 Hills Road, Cambridge CB2 1GE.

OCR is part of the Cambridge Assessment Group; Cambridge Assessment is the brand name of University of Cambridge Local Examinations Syndicate (UCLES), which is itself a department of the University of Cambridge.