

Monday 28 January 2013 – Morning

A2 GCE MATHEMATICS (MEI)

4763/01 Mechanics 3

QUESTION PAPER

Candidates answer on the Printed Answer Book.

OCR supplied materials:

- Printed Answer Book 4763/01
- MEI Examination Formulae and Tables (MF2)

Other materials required:

- Scientific or graphical calculator

Duration: 1 hour 30 minutes



INSTRUCTIONS TO CANDIDATES

These instructions are the same on the Printed Answer Book and the Question Paper.

- The Question Paper will be found in the centre of the Printed Answer Book.
- Write your name, centre number and candidate number in the spaces provided on the Printed Answer Book. Please write clearly and in capital letters.
- **Write your answer to each question in the space provided in the Printed Answer Book.** Additional paper may be used if necessary but you must clearly show your candidate number, centre number and question number(s).
- Use black ink. HB pencil may be used for graphs and diagrams only.
- Read each question carefully. Make sure you know what you have to do before starting your answer.
- Answer **all** the questions.
- Do **not** write in the bar codes.
- You are permitted to use a scientific or graphical calculator in this paper.
- Final answers should be given to a degree of accuracy appropriate to the context.
- The acceleration due to gravity is denoted by $g \text{ m s}^{-2}$. Unless otherwise instructed, when a numerical value is needed, use $g = 9.8$.

INFORMATION FOR CANDIDATES

This information is the same on the Printed Answer Book and the Question Paper.

- The number of marks is given in brackets [] at the end of each question or part question on the Question Paper.
- You are advised that an answer may receive **no marks** unless you show sufficient detail of the working to indicate that a correct method is being used.
- The total number of marks for this paper is **72**.
- The Printed Answer Book consists of **16** pages. The Question Paper consists of **4** pages. Any blank pages are indicated.

INSTRUCTION TO EXAMS OFFICER/INVIGILATOR

- Do not send this Question Paper for marking; it should be retained in the centre or recycled. Please contact OCR Copyright should you wish to re-use this document.

- 1 (a) A particle P is executing simple harmonic motion, and the centre of the oscillations is at the point O. The maximum speed of P during the motion is 5.1 m s^{-1} . When P is 6 m from O, its speed is 4.5 m s^{-1} . Find the period and the amplitude of the motion. [6]

- (b) The force F of gravitational attraction between two objects of masses m_1 and m_2 at a distance d apart is given by $F = \frac{Gm_1m_2}{d^2}$, where G is the universal gravitational constant.

- (i) Find the dimensions of G . [3]

Three objects, each of mass m , are moving in deep space under mutual gravitational attraction. They move round a single circle with constant angular speed ω , and are always at the three vertices of an equilateral triangle of side R . You are given that $\omega = kG^\alpha m^\beta R^\gamma$, where k is a dimensionless constant.

- (ii) Find α , β and γ . [5]

For three objects of mass 2500 kg at the vertices of an equilateral triangle of side 50 m, the angular speed is $2.0 \times 10^{-6} \text{ rad s}^{-1}$.

- (iii) Find the angular speed for three objects of mass $4.86 \times 10^{14} \text{ kg}$ at the vertices of an equilateral triangle of side 30 000 m. [4]

- 2 (a) A fixed solid sphere with a smooth surface has centre O and radius 0.8 m. A particle P is given a horizontal velocity of 1.2 m s^{-1} at the highest point on the sphere, and it moves on the surface of the sphere in part of a vertical circle of radius 0.8 m.

- (i) Find the radial and tangential components of the acceleration of P at the instant when OP makes an angle $\frac{1}{6}\pi$ radians with the upward vertical. (You may assume that P is still in contact with the sphere.) [5]

- (ii) Find the speed of P at the instant when it leaves the surface of the sphere. [6]

- (b) Two fixed points R and S are 2.5 m apart with S vertically below R. A particle Q of mass 0.9 kg is connected to R and to S by two light inextensible strings; Q is moving in a horizontal circle at a constant speed of 5 m s^{-1} with both strings taut. The radius of the circle is 2.4 m and the centre C of the circle is 0.7 m vertically below S, as shown in Fig. 2.

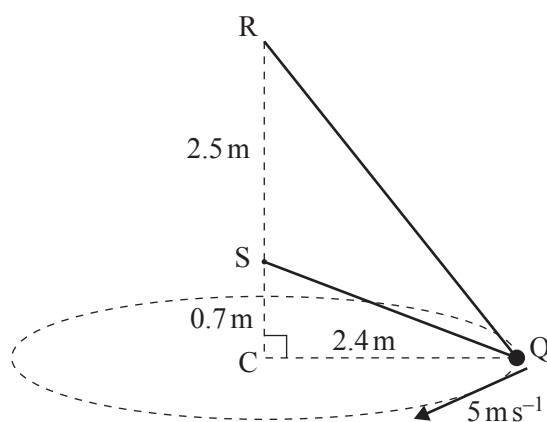


Fig. 2

- Find the tension in the string RQ and the tension in the string SQ. [7]

- 3 Two fixed points X and Y are 14.4 m apart and XY is horizontal. The midpoint of XY is M. A particle P is connected to X and to Y by two light elastic strings. Each string has natural length 6.4 m and modulus of elasticity 728 N. The particle P is in equilibrium when it is 3 m vertically below M, as shown in Fig. 3.

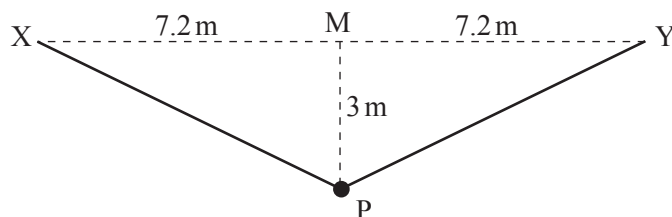


Fig. 3

- (i) Find the tension in each string when P is in the equilibrium position. [3]
 (ii) Show that the mass of P is 12.5 kg. [3]

The particle P is released from rest at M, and moves in a vertical line.

- (iii) Find the acceleration of P when it is 2.1 m vertically below M. [5]
 (iv) Explain why the maximum speed of P occurs at the equilibrium position. [1]
 (v) Find the maximum speed of P. [6]

- 4 (a) The region enclosed between the curve $y = x^4$ and the line $y = h$ (where h is positive) is rotated about the y -axis to form a uniform solid of revolution. Find the y -coordinate of the centre of mass of this solid. [5]
 (b) The region A is bounded by the x -axis, the curve $y = x + \sqrt{x}$ for $0 \leq x \leq 4$, and the line $x = 4$. The region B is bounded by the y -axis, the curve $y = x + \sqrt{x}$ for $0 \leq x \leq 4$, and the line $y = 6$. These regions are shown in Fig. 4.

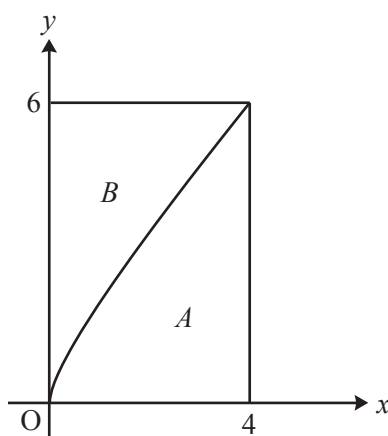


Fig. 4

- (i) A uniform lamina occupies the region A . Show that the x -coordinate of the centre of mass of this lamina is 2.56, and find the y -coordinate. [9]
 (ii) Using your answer to part (i), or otherwise, find the coordinates of the centre of mass of a uniform lamina occupying the region B . [4]

THERE ARE NO QUESTIONS PRINTED ON THIS PAGE.



Copyright Information

OCR is committed to seeking permission to reproduce all third-party content that it uses in its assessment materials. OCR has attempted to identify and contact all copyright holders whose work is used in this paper. To avoid the issue of disclosure of answer-related information to candidates, all copyright acknowledgements are reproduced in the OCR Copyright Acknowledgements Booklet. This is produced for each series of examinations and is freely available to download from our public website (www.ocr.org.uk) after the live examination series.

If OCR has unwittingly failed to correctly acknowledge or clear any third-party content in this assessment material, OCR will be happy to correct its mistake at the earliest possible opportunity.

For queries or further information please contact the Copyright Team, First Floor, 9 Hills Road, Cambridge CB2 1GE.

OCR is part of the Cambridge Assessment Group; Cambridge Assessment is the brand name of University of Cambridge Local Examinations Syndicate (UCLES), which is itself a department of the University of Cambridge.