



Design and Technology

GCSE 2012

D&T: Graphics

Specification

J303 – Full Course

Version 2

May 2016



A FEW GOOD REASONS TO WORK WITH OCR

- You can enjoy the **freedom and excitement** of teaching qualifications which have been developed to help you inspire students of all abilities.
- We've built specifications **with you in mind**, using a clear and easy-to-understand format, making them straightforward for you to deliver.
- Our **clear and sensible assessment** approach means that exam papers and requirements are clearly presented and sensibly structured for you and your students.
- **Pathways for choice** – we have the broadest range of qualifications and our GCSEs provide an ideal foundation for students to progress to more-advanced studies and into the workplace.
- **Working in partnership to support you** – together with teachers we've developed a range of practical help and support to save you time. We provide everything you need to teach our specifications with confidence and ensure your students get as much as possible from our qualifications.
- **A personal service** – as well as providing you with lots of support resources, we're also here to help you with specialist advice, guidance and support for those times when you simply need a more individual service.

HERE'S HOW TO CONTACT US FOR SPECIALIST ADVICE:

By phone: 01223 553998

By email: general.qualifications@ocr.org.uk

By online: <http://answers.ocr.org.uk>

By fax: 01223 552627

By post: Customer Contact Centre, OCR, Progress House, Westwood Business Park, Coventry CV4 8JQ

DON'T FORGET – you can download a copy of this specification and all our support materials at www.ocr.org.uk/gcse2012



1. Introduction to GCSE in Design Technology: Graphics	6
1.1 Introduction to the Innovator Design and Technology Suite	6
1.2 Overview of GCSE Design and Technology: Graphics (J303)	7
1.3 Guided learning hours	8
1.4 Aims and learning outcomes	8
1.5 Prior learning/attainment	8
2. Content of GCSE Design and Technology: Graphics	9
2.1 Unit A531: <i>Introduction to designing and making</i>	9
2.2 Unit A533: <i>Making quality products</i>	11
2.3 Unit A535: <i>Sustainability and technical aspects of designing and making</i>	13
3. Assessment of GCSE Design and Technology: Graphics	21
3.1 Assessment in GCSE Design and Technology: Graphics	21
3.2 Assessment Objectives (AOs)	23
3.3 Grading and awarding grades	23
3.4 Grade descriptions	24
3.5 Quality of written communication	25
4. Controlled assessment in GCSE Design and Technology: Graphics	26
4.1 Controlled assessment tasks	26
4.2 Planning and managing controlled assessment	27
4.3 Marking and moderating controlled assessment	28
4.4 Submitting the moderation samples via the OCR Repository	38
5. Support for GCSE Design and Technology: Graphics	39
5.1 Free resources available from the OCR website	39
5.2 Other resources	39
5.3 Training	40
5.4 OCR support services	40
6. Equality and Inclusion in GCSE Design and Technology: Graphics	41
6.1 Equality Act information relating to GCSE Design and Technology: Graphics	41
6.2 Arrangements for candidates with particular requirements (including Special Consideration)	42

7. Administration of GCSE Design and Technology: Graphics 43

7.1 Availability of assessment from 2014	43
7.2 Certification rules	43
7.3 Rules for re-taking a qualification	43
7.4 Making entries	44
7.5 Enquiries about results	45
7.6 Prohibited qualifications and classification code	45

8. Other information about GCSE Design and Technology: Graphics 46

8.1 Overlap with other qualifications	46
8.2 Progression from this qualification	46
8.3 Avoidance of bias	46
8.4 Regulatory requirements	46
8.5 Language	46
8.6 Spiritual, moral, ethical, social, legislative, economic and cultural issues	46
8.7 Sustainable development, health and safety considerations and European developments, consistent with international agreements	47
8.8 Key Skills	47
8.9 ICT	48
8.10 Citizenship	48

Appendix A: Controlled Assessment Themes – Unit A531 and Unit A533 49

Unit A531	49
Unit A533	50

Appendix B: Guidance for the production of electronic controlled assessment 51

Structure for evidence	51
Data formats for evidence	51

Vertical black lines indicate a significant change to the previous printed version.

1.1 Introduction to the Innovator Design and Technology Suite

The Innovator Design and Technology suite comprises five Design and Technology GCSEs for the innovators of the future:

- Electronics and Control Systems
- Graphics
- Industrial Technology
- Resistant Materials
- Textiles Technology.

All five specifications follow the same structure:

Unit 1: Introduction to designing and making

- Developing research and investigation skills
- Developing drawing skills where appropriate
- Modelling/Trialling
- Evaluating process/product

Unit 2: Making quality products

- Designing for a need
- Working with tools and equipment
- Making a product
- Evaluating the product

Unit 3: Sustainability and technical aspects of designing and making

- Consideration of products
- Consideration of the environment
- Consideration of society and economy
- Working with tools and materials
- Selecting processes
- Designing for success

These specifications provide innovative and imaginative suite of qualifications rewarding flair and imagination and reflecting the contemporary use of materials and information technology. One key element of these specifications is to encourage candidates to recognise the contribution they can make to meeting human needs and the environment through careful consideration and selection of sustainable resources.

Candidates have the opportunity to work with design concepts and materials in ways which recognise the need for wise choices being made in terms of meeting the needs of people, society, and the environment. Taught as a suite of qualifications there are opportunities for efficient use of both human and physical resources. Teachers can be confident in the knowledge that they are part of a team preparing candidates for a common goal.

Candidates wishing to follow a **Short Course in any D&T material area** should take **GCSE Design and Technology Product Design units A551 and A552**, details of which can be found in GCSE Design and Technology Product Design Specification J305.

Please be aware that with effect from September 2016, Food Technology will no longer be available as part of the Innovator Design and Technology suite. For centres looking for an alternative GCSE course to replace Food Technology, we would recommend our new GCSE (9-1) in Food Preparation and Nutrition (J309). Please visit www.ocr.org.uk for details. This Food Preparation and Nutrition qualification is for first teaching in September 2016 and first assessment in 2018 in 2018.

1.2 Overview of GCSE Design and Technology: Graphics (J303)

Unit A531: *Introduction to designing and making*

This unit involves candidates researching, designing and subsequently modelling a functional prototype.

Candidates must select a theme from a theme set by OCR (see Appendix A). This theme can be contextualised in order to best suit centre-specific circumstances.

60 marks

30% of the total GCSE marks

Controlled assessment – 20 hours

This unit is internally assessed and externally moderated.

+

Unit A533: *Making quality products*

This unit focuses on the design and manufacture of a complete product from a theme set by OCR (see Appendix A). This should involve the candidate in the identification of a suitable design opportunity, generation of design ideas showing creativity, modelling and skilful manufacture of a quality product, recording the key stages/processes of making and critical evaluation.

60 marks

30% of the total GCSE marks

Controlled assessment – 20 hours

This unit is internally assessed and externally moderated.

+

Unit A535: *Sustainability and technical aspects of designing and making*

This unit focuses on the knowledge, skills and understanding underpinning the design and manufacture of products made from graphic materials.

80 marks

40% of the total GCSE marks

1 hour 30 mins written paper

Section A consists of **15** short answer questions and **one** question which may involve sketching, annotation, short sentences and extended writing. This section will focus on sustainability, product analysis and design.

Section B consists of **three** questions which may involve sketching, annotation, short sentences and extended writing. This section will focus on the technical aspects of working with equipment and the design of products.

This unit is externally assessed.

1.3 Guided learning hours

GCSE Design and Technology: Graphics requires 120–140 guided learning hours in total.

1.4 Aims and learning outcomes

GCSE specifications in Design and Technology should encourage candidates to be inspired, moved and challenged by following a broad, coherent, satisfying and worthwhile course of study and gain an insight into related sectors, such as manufacturing and engineering. They should prepare candidates to make informed decisions about further learning opportunities and career choices.

GCSE specifications in Design and Technology must enable candidates to:

- actively engage in the processes of Design and Technology to develop as effective and independent learners
- make decisions, consider sustainability and combine skills with knowledge and understanding in order to design and make quality products
- explore ways in which aesthetic, technical, economic, environmental, ethical and social dimensions interact to shape designing and making
- analyse existing products and produce practical solutions to needs, wants and opportunities, recognising their impact on the quality of life
- develop decision-making skills through individual and collaborative working
- understand that designing and making reflect and influence cultures and societies, and that products have an impact on lifestyle
- develop skills of creativity and critical analysis through making links between the principles of good design, existing solutions and technological knowledge.

1.5 Prior learning/attainment

Candidates entering this course should have achieved a general educational level equivalent to National Curriculum Level 3, or an Entry 3 at Entry Level within the National Qualifications framework.

2.1 Unit A531: Introduction to designing and making

This unit focuses on:

- developing research and investigation skills
- developing drawing skills where appropriate
- modelling/trialling
- evaluating process.

This unit aims to give candidates an introduction to Designing and Making using graphic materials.

Candidates must select one of the published themes (see Appendix A) as a starting point for this controlled assessment unit. Once selected, the candidate will then need to identify a specific product or starting point that is associated with the theme. For example, if the chosen theme is 'Promotional Items' a candidate may decide to design and model a three dimensional prototype* such as a free standing calendar that promotes a company.

Candidates then undertake research associated with the specific product before establishing their own design brief and detailed specification for an improved or similarly functioning product. They develop their design and use modelling before making and testing their prototype* and evaluating the making process. Throughout, the candidate will record research and design developments using a portfolio to include photographs and other digital media.

In order to skilfully design, model, make and test their prototype*, candidates should undertake the processes outlined overleaf.

This unit is a controlled assessment unit. For further details see Section 4.

**In this context a prototype is defined as the first example of a product that could be further developed or modified.*

Candidates will be assessed on their ability to:

Demonstrate creativity	<ul style="list-style-type: none"> • Use appropriate recording and drawing techniques including the use of ICT. • Identify the principles of good design and relate products to the needs of the user. • Identify the significance of trends in existing products.
Develop designing skills	<ul style="list-style-type: none"> • Produce an appropriate and considered response to a design brief. • Produce a detailed specification for the product. • Use detailed notes and annotated drawings to record original design ideas. • Use a range of graphic skills and techniques. • Use CAD to support design development. • Clearly communicate details of the chosen design for prototype* production.

-
- | | |
|--|---|
| Demonstrate good making skills | <ul style="list-style-type: none">• Plan and organise activities.• Use appropriate modelling techniques to aid product development.• Make reasoned decisions about materials/components.• Select appropriate equipment.• Work skilfully and safely to produce a high-quality prototype* that is fit for purpose.• Demonstrate ability to produce surface graphics to a high level of competency.• Apply knowledge of digital media and new technologies as appropriate.• Demonstrate a practical and thorough understanding and ability in solving technical problems effectively and efficiently as they arrive.• Record key stages in the creation of the prototype*. |
| Demonstrate critical evaluation skills | <ul style="list-style-type: none">• Evaluate the processes involved in making the final prototype*.• Suggest modifications to improve the modelling and prototype* process. |
-

**In this context a prototype is defined as the first example of a product that could be further developed or modified.*

2.2 Unit A533: Making quality products

This unit focuses on:

- designing for a need
- working with tools and equipment
- making a product
- evaluating the product.

In this unit, candidates will further develop skills and abilities gained while undertaking Unit A531 in order to design and make a fully functioning quality product. Candidates must select one of the published themes (see Appendix A) as a starting point for this controlled assessment unit. The type of project selected needs to be challenging but realistic in terms of the resources and time available. Candidates should be encouraged to consider their own needs/requirements or those of an identified user group, as well as the situation in which the product will be used.

Candidates will be required to consider the focus of the design brief before developing a design specification. Candidates need to demonstrate their ability to plan, to develop creative and original design ideas and to carry out a range of practical activities.

Candidates will critically evaluate their ideas against the design specification to identify, with reasons, the chosen design proposal for product development. As a result of product development, candidates will be expected to give reasoned decisions for the materials and equipment required for the production of the final product. Throughout the task, the candidate will record research, design developments and production using a portfolio to include photographs and other digital media.

Candidates will test and critically evaluate their final product against a product specification.

This unit is a controlled assessment unit. See Section 4 for further details.

Candidates will be assessed on their ability to

- | | |
|--|---|
| Develop and demonstrate designing skills | <ul style="list-style-type: none"> • Use appropriate recording and drawing techniques. • Identify complex associations linking principles of good design and technological knowledge. • Produce a creative and considered response to a design brief. • Produce a detailed specification for the product. • Use detailed notes and annotated drawings to record original design ideas. • Use ICT/CAD/CAM to support design development. • Use drawing and annotation to clearly communicate details of the design chosen for prototype production. |
|--|---|

Demonstrate good making/
workshop skills

- Plan, organise and record key manufacturing activities by means of comprehensive notes and photographic evidence.
- Use appropriate modelling or trialling techniques to aid product development.
- Make reasoned decisions about materials/components.
- Select appropriate materials.
- Select appropriate tools and equipment.
- Work skilfully and safely to shape, form, finish materials and assemble components.
- Apply knowledge of systems and control, ICT and new technologies as appropriate.
- Complete the product to a high-quality standard.
- Demonstrate the ability to produce surface graphics to a high level of competency.
- Demonstrate a practical and thorough understanding and ability in solving technical problems effectively and efficiently as they arise.

Demonstrate critical
evaluation skills

- Evaluate through detailed testing against the product specification.
 - Present meaningful conclusions leading to suggestions for possible improvements.
-

2.3 Unit A535: Sustainability and technical aspects of designing and making

This unit focuses on:

- consideration of products
- consideration of the environment
- consideration of society and the economy
- working with tools and materials
- selecting processes
- designing for success

This unit focuses on the knowledge, skills and understanding underpinning the design and manufacture of products made from graphic materials.

The assessment of this unit is through an externally set and externally marked test.

Candidates will need a knowledge and understanding of:

- trends and innovations in design and manufacture, labelling and packaging
- social, moral, cultural, economic, environmental and sustainability issues inherent in Design and Technology
- product life cycle and life cycle analysis (LCA)
- designing and making quality manufactured products
- planning production with consideration of the use of time and resources
- performance characteristics of different materials including 'Smart' and modern
- tools and equipment, including new technologies, used to make quality manufactured products
- processes and techniques used to make quality manufactured products, both decorative and functional
- the impact that the use of graphic products has on the environment, including the need to consider sustainability
- health and safety issues.

Candidates will be assessed on their knowledge of:

The 6Rs

Recycle

- Materials that can be recycled – primary, secondary and tertiary.
- Products that use recycled materials.
- Disassembly – reprocessing materials for use in new products.

Reuse

- Products that can be reused for either the same or a new purpose.
- Products that can be adapted to suit an alternative use.

Reduce

- Life cycle of a product(s)/Eco footprint.
 - Built-in obsolescence.
 - Energy and waste of production process.
 - Materials – waste.
-

Refuse

- Issues relating to sustainable design.
 - Materials we should refuse to use.
-

Rethink

- How it is possible to approach design problems differently.
 - An existing product that has become waste, e.g. utilising the materials or components for another purpose without processing it.
-

Repair

- Products that can/cannot be repaired.
-

Product analysis and the design of products

Social Issues

- Social development, through recognising the need to consider the views of others, including people with disabilities, when designing and discussing designed products.
 - Anthropometrics and ergonomics.
 - Signs and symbols giving valuable information about materials, products and safety issues.
-

Moral Issues

- Conditions of working.
 - Protecting the safety of users of products.
 - Ethical trading initiative (ETI).
-

Cultural Issues

- Looking at, responding to and valuing the responses of others to design solutions.
 - The impact of different cultures on modern products.
-

Environmental Issues

- Understand and be able to select materials (including “smart” and modern materials) that are both suitable and sustainable.
- The reduction in the common use of chemicals and materials dangerous to the environment, i.e. bleaches, CFCs, toxic materials.
- Carbon footprint – transportation of materials and goods, energy usage in manufacture.
- Carbon offsetting.
- The need to dispose of redundant products and their packaging in a safe and environmentally friendly way.

Design Issues

- Identify how good design and product choice improves the quality of life.
- Examine the way that designers respond to changing styles, taste, technological advances and environmental pressures.
- Eco-design. The whole system of looking at a product from design to finished article, its use of materials and energy.
- The globalisation of products.

Materials

The general classification of graphic materials

- Paper – sizes and types and their suitability for different situations.
- Card and Board.
- Foam Board – its nature and properties.
- Sheet Plastics (up to 1mm thick) – their suitability for different situations; suitability of thermoplastic sheet for line bending and vacuum forming.
- Corriflute.
- Styrofoam.

Physical and aesthetic properties of graphic materials

- Hardness, toughness, strength, flexibility, impact resistance, strength to weight ratio and aesthetic qualities.
- Recognise the importance of understanding the physical and aesthetic properties of graphics materials when selecting a material for a specific use.
- The purpose of self and applied finishes protecting, preserving and/or enhancing the appearance of products, including: laminating; spirit varnish; ultra violet (UV) lacquer; embossing; foil application.

Joining materials	<ul style="list-style-type: none"> Joining methods, including PVA adhesive, spray adhesive, solvent cement, hot melt glue (glue gun), epoxy resin, glue sticks, single and double-sided adhesive tape. Pre-manufactured components including Velcro, double sided sticky pads, paper fasteners, eyelets, press fit 'click' fasteners, Clic rivets (plastic rivets), and their suitability for different situations.
'Smart' and modern materials	<ul style="list-style-type: none"> Including – Polymorph, Thermochromic inks, pigments and film, Photochromic inks and pigments, Phosphorent pigments, Fluorescent pigments. Be aware of developments in nanotechnology as they emerge, for example NanoComposites, NanoCrystals, NanoClays, NanoStructured materials, NanoParticles and NanoTubes and how they are used in products such as glues, packaging, paints, coatings, displays and fabrics.
Design	<ul style="list-style-type: none"> Generate and record a range of innovative design solutions for a specific task/user need using a range of graphic techniques. Evaluate and modify ideas with consideration to creativity and sustainability. Consider the initial task, the need to be met. Justify choice and rejection of ideas. Select and justify materials when designing and making products. Understand the purpose of prototyping when designing and making products. Identify specific ergonomic and anthropometric requirements within a product.
Product planning	<ul style="list-style-type: none"> Choose and prepare materials economically. Plan work to make best use of materials, components, equipment and resources.
Tools and equipment	<ul style="list-style-type: none"> Knowledge and understanding of the basic graphics materials. Equipment; how to select the appropriate tool and use it safely and effectively.
Processes	
Recognise, name and draw basic graphic shapes and developments	<ul style="list-style-type: none"> Triangles; quadrilaterals; pentagons; hexagons; octagons; ellipses.

Read, interpret and produce drawings to scale	<ul style="list-style-type: none"> • Orthographic Projection – Third angle to include the layout of views, dimensioning; the third angle projection symbol; the use of square grids. • Sectional Views – whole sections on the principal vertical and horizontal lines; cross hatching. • Assembly Drawings – to show up to three separate component parts join together to make a product; parts list. • Isometric Drawing – to include circles and part circles using any appropriate accurate method; isometric grids; exploded views showing up to three component parts. • Perspective Drawing – one- and two-point perspective, excluding circles and curves. • Developments (nets) including fold/cut lines and appropriate flaps/tabs.
Enhancement techniques – suggesting form and material	<ul style="list-style-type: none"> • Tone – apply an understanding of light, shade and shadow to enhance mass in pictorial drawing; to include the use of shading, shadowing, highlights, reflections, lines and dots. • Thick and Thin Lines – to enhance pictorial drawings, create impact and make objects look more solid. • Texture – use textural representation to illustrate the following materials – wood, plastics (matt, textured and shiny), glass, metal (matt and chrome), architectural surfaces. • Select colours based on aesthetic considerations, an understanding of the colour wheel, making use of colour associations, e.g. green for safety.
Graphical interpretation of data	<ul style="list-style-type: none"> • Be able to translate or transpose written data into a visual form.
Developments	<ul style="list-style-type: none"> • Shapes based on cube, prism, cylinder, pyramid, cone of these shapes; correct representation of fold lines, use of glue tabs, fold-in flaps and slot and tab fixing methods that do not require adhesive.
The conversion or altering of materials into other usable forms	<ul style="list-style-type: none"> • Laminating card and paper; corrugation.

Manufacturing processes	<ul style="list-style-type: none">• Use of suitable tools including:<ul style="list-style-type: none">- scissors- craft knife- safety rule- circle cutter- perforation cutter- cutting mat.• Vacuum former and strip heater to form thin plastic sheet.
Printing methods	<ul style="list-style-type: none">• Colour separation, process colours, CMYK, registration marks and the order of application of colours; digital printing.
Cutting and creasing	<ul style="list-style-type: none">• Card and paper, including:<ul style="list-style-type: none">- die cutters and creasing bars- laser cutting- guillotine.
Mechanical systems	<ul style="list-style-type: none">• Analyse and design simple mechanical systems of the type used for pop-up cards and interactive pages in educational and story books based on:<ul style="list-style-type: none">- levers and linkages – select appropriate levers, linkages and rotating discs to design mechanisms that bring about required changes of movement; select components for joining and acting as pivots, paper fasteners, eyelets, Clic rivets (plastic rivets).• Pop-up Systems – based on V-fold mechanisms; multiple layers (parallelogram) mechanisms.

Computer Applications

- Use of CAD packages in the school environment for producing drawings and 2D/3D images.
 - On-screen modelling and manipulation of images.
 - Storing and sharing data electronically to include:
 - file Format
 - file Size
 - data Transfer.
 - Application of CAD/CAM to the designing and making of models and prototypes.
 - Application of CAD/CAM to quantity production.
 - Computer control of machines (CNC), including:
 - laser cutters
 - printing machines to include consideration of quality and quantity, Rapid prototyping.
 - Copyright issues associated with download and use of images.
 - Selection of appropriate text styles and point sizes for a given situation; the use of correct layout technique such as text justification.
 - Use of image manipulation software to alter/enhance images to include facilities such as:
 - crop
 - resize
 - rotate
 - layer
 - re-colour
 - distort
 - blur
 - mirror
 - justify.
 - Understand the difference between applications of Vector and Bitmap images.
-

Health and safety	<ul style="list-style-type: none"> • Understand the importance of personal safety when engaged in designing and making activities, including: <ul style="list-style-type: none"> - Personal protective equipment - machine guards - accident procedures. • Understand basic risk-assessment procedures. • Understand the importance of following instructions provided for certain materials and processes. • Recognise and understand safety symbols used in the workshop or studio.
Quality	<ul style="list-style-type: none"> • Distinguish between quality of design and quality of manufacture. • Describe simple quality control checks to ensure accuracy and quality of finish.
Product analysis	<ul style="list-style-type: none"> • Establish the function of commercially manufactured graphics materials products; determine what the product was designed to do. • Determine the intended market or user of the product. • Identify the materials and components from which products are made. • Give reasons why specific materials have been used by referring to the working properties of materials. • Identify the process used to make the product. • Compare a variety of products designed to meet the same need. • Assess commercially manufactured products to determine fitness for purpose. • Carry out a Life Cycle Analysis (LCA) to a variety of products.

Delivery of the Unit

In this unit, candidates could develop their knowledge and understanding through:

- focused practical tasks that develop a range of technical skills and knowledge of sustainability, materials and processes
- product analysis
- design-and-make assignments that include activities and resources as well as industrial practices
- group discussion, researching concepts and recording information, visits to particular Technology Innovation centres, museums and industry etc.

Evidence should be collected and recorded (not assessed), which can be used at the end of the unit for examination preparation.

3.1 Assessment in GCSE Design and Technology: Graphics

For GCSE Design and Technology: Graphics candidates must take all **three** units.

Unit A531: *Introduction to designing and making*

30% of the total GCSE

Controlled assessment

Approx 20 hours

60 marks

Quality of written communication is assessed in this unit (see Section 3.5).

The task will require the candidate to produce:

- a number of concise worksheets (A3, A4 or digital equivalent) showing design development, modelling and evaluation including annotations of materials, machinery and working practices used. This may include the use of ICT to support the designing process
- a design specification
- a prototype product, that can be evaluated
- digital images/photographs of any models or mock-ups used by the candidate when designing, modelling, testing or evaluating to exemplify key stages, materials and techniques used
- digital images/photographs showing sufficient detail of the prototype in use and the quality of the finished prototype
- a completed OCR cover sheet.

Tasks will be conducted under informal supervision within tight guidelines specified by OCR (see Section 4).

Teachers are required to ensure that candidates do not pursue the same theme for their work as submitted or intended for submission for Unit A533.

In addition to the formal 20 hours there should also be further teaching time to increase depth and knowledge and understanding before starting the controlled assessment.

The task must allow the candidate to:

- develop and use research and investigation skills
- develop drawing skills
- use modelling
- produce a prototype
- evaluate the process.

Candidates must use appropriate ICT to help with their work. This might include CAD/CAM, data analysis and ICT-based sources for research and design relevant to the task.

It is not expected that the prototype product should accompany the portfolio during the external moderation process.

This controlled assessment is marked internally and externally moderated.

Unit A533: Making quality products

30% of the total GCSE

Controlled assessment

Approx 20 hours

60 marks

Quality of written communication is assessed in this unit (see Section 3.5).

The task will require the candidate to produce:

- a production plan including design specification
- a number of concise worksheets or design presentation boards (A3, A4 or digital equivalent) showing design development, modelling, testing and evaluation including annotations of materials, machinery and working practices. This may include the use of ICT to support the designing process
- a product which can be evaluated
- digital images/photographs of any models or mock-ups used by the candidate when designing, modelling, testing or evaluating to exemplify key stages, materials and techniques used
- digital images/photographs of the final product (which may be 2D or 3D) showing sufficient detail of the final product in use and the quality of the final product
- a completed OCR cover sheet.

Tasks will be conducted under informal supervision within tight guidelines specified by OCR (see Section 4).

Teachers are required to ensure that candidates do not pursue the same theme for their work as submitted or intended for submission for Unit A531.

In addition to the formal 20 hours there should also be further teaching time to increase depth and knowledge and understanding before starting the controlled assessment.

The task will allow the candidate to:

- design for a need
- work with tools and equipment
- make a product
- evaluate the product.

Candidates must use appropriate ICT to help with their work. This might include CAD/CAM, data analysis and ICT-based sources for research and design relevant to the task.

It is not expected that the final product should accompany the portfolio during the external moderation process.

This controlled assessment is marked internally and externally moderated.

Unit A535: Sustainability and technical aspects of designing and making

40% of the total GCSE
1 hour 30 mins written paper
80 marks
Quality of written communication is assessed in this unit (see Section 3.5).

The paper will consist of questions that focus on sustainability and technical aspects of designing and making.

Section A consists of **15** short answer questions and **one** question which may involve sketching, annotation, short sentences and extended writing. This section will focus on sustainability, product analysis and design.

Section B consists of **three** questions which may involve sketching, drawing, annotation, short sentences and extended writing. This section will focus on the technical aspects of working with equipment and the design of products.

This unit is externally assessed.

3.2 Assessment Objectives (AOs)

Candidates are expected to demonstrate their ability to:

AO1	Recall, select and communicate their knowledge and understanding in Design and Technology including its wider effects.
AO2	Apply knowledge, understanding and skills in a variety of contexts and in designing and making products.
AO3	Analyse and evaluate products, including their design and production.

3.2.1 AO weightings – GCSE Design and Technology: Graphics

The relationship between the units and the assessment objectives of the scheme of assessment is shown in the following grid:

Unit	% of GCSE			Total
	AO1	AO2	AO3	
Unit A531: <i>Introduction to designing and making</i>	8	18	4	30%
Unit A533: <i>Making quality products</i>		25	5	30%
Unit A535: <i>Sustainability and technical aspects of designing and making</i>	26	7	7	40%
Total	34%	50%	16%	100%

For GCSE Design and Technology: Graphics candidates must take all three units

3.3 Grading and awarding grades

GCSE results are awarded on the scale A* to G. Units are awarded a* to g. Grades are indicated on certificates. However, results for candidates who fail to achieve the minimum grade (G or g) will be recorded as *unclassified* (U or u) and this is **not** certificated.

Most GCSEs are unitised schemes. When working out candidates' overall grades OCR needs to be able to compare performance on the same unit in different series when different grade boundaries may have been set, and between different units. OCR uses a Uniform Mark Scale to enable this to be done.

A candidate's uniform mark for each unit is calculated from the candidate's raw mark on that unit. The raw mark boundary marks are converted to the equivalent uniform mark boundary. Marks between grade boundaries are converted on a pro rata basis.

When unit results are issued, the candidate's unit grade and uniform mark are given. The uniform mark is shown out of the maximum uniform mark for the unit, e.g. 40/60.

The specification is graded on a Uniform Mark Scale. The uniform mark thresholds for each of the assessments are shown below:

(GCSE) Unit Weighting	Maximum Unit Uniform Mark	Unit Grade								
		a*	a	b	c	d	e	f	g	u
30%	60	54	48	42	36	30	24	18	12	0
40%	80	72	64	56	48	40	32	24	16	0

A candidate's uniform marks for each unit are aggregated and grades for the specification are generated on the following scale:

Qualification	Max Uniform Mark	Qualification Grade								
		A*	A	B	C	D	E	F	G	U
GCSE	200	180	160	140	120	100	80	60	40	0

The written paper will have a total weighting of 40% and controlled assessment a weighting of 60%.

A candidate's uniform marks for each paper will be combined with the uniform marks for the controlled assessments to give a total uniform mark for the specification. The candidate's grade will be determined by the total uniform mark.

3.4 Grade descriptions

Grade descriptions are provided to give a general indication of the standards of achievement likely to have been shown by candidates awarded particular grades. The descriptions must be interpreted in relation to the content in the specification; they are not designed to define that content. The grade awarded will depend in practice upon the extent to which the candidate has met the assessment objectives overall. Shortcomings in some aspects of the assessment may be balanced by better performance in others.

The grade descriptors have been produced by the regulatory authorities in collaboration with the awarding bodies.

3.4.1 Grade F

Candidates recall, select and communicate knowledge and understanding of basic aspects of Design and Technology, including its wider effects.

They apply limited knowledge, understanding and skills to plan and carry out simple investigations and tasks, with an awareness of the need for safety and precision. They modify their approach in the light of progress.

They review their evidence and draw basic conclusions.

3.4.2 Grade C

Candidates recall, select and communicate sound knowledge and understanding of Design and Technology, including its wider effects.

They apply knowledge, understanding and skills in a range of situations to plan and carry out investigations and tasks. They test their solutions, working safely and with precision.

They review the evidence available, analysing and evaluating some information clearly, and with some accuracy. They make judgements and draw appropriate conclusions.

3.4.3 Grade A

Candidates recall, select and communicate detailed knowledge and thorough understanding of Design and Technology, including its wider effects.

They apply relevant knowledge, understanding and skills in a range of situations to plan and carry out investigations and tasks effectively. They test their solutions, working safely and with a high degree of precision.

They analyse and evaluate the evidence available, reviewing and adapting their methods when necessary. They present information clearly and accurately, making reasoned judgements and presenting substantiated conclusions.

3.5 Quality of written communication

Quality of written communication is assessed in all units.

Candidates are expected to:

- ensure that text is legible and that spelling, punctuation and grammar are accurate so that meaning is clear
- use technical language as appropriate
- present information in a form that suits its purpose
- use an appropriate style of writing and, where applicable, specialist terminology.

This section provides general guidance on controlled assessment: what controlled assessment tasks are, when and how they are available; how to plan and manage controlled assessment and what controls must be applied throughout the process. More support can be found on the [OCR website](#).

Teaching and Learning

Controlled assessment is designed to be an integral part of teaching and learning. Activities which develop skills take place regularly in the classroom, using a variety of appropriate resources (as chosen by the teacher). These opportunities allow candidates to practise a wide range of tasks, and teachers can discuss and comment on performance as appropriate. There are no restrictions regarding time or feedback to individual learners.

When all necessary teaching and learning has taken place and teachers feel that candidates are ready for assessment, candidates can be given the/should choose an appropriate controlled assessment task.

4.1 Controlled assessment tasks

All controlled assessment tasks for units A531 and A533 are set by OCR. (see Appendix A)

Controlled assessment tasks will be available on Interchange and will be reviewed every two years. Guidance on how to access controlled assessment tasks from Interchange is available on the [OCR website](#).

Centres must ensure that candidates undertake a task applicable to the correct year of the examination.

Centres can choose one from a number of theme based tasks offered by OCR. These tasks can be used with a minimum amount of adaptation or they can be adapted so that they allow the usage of local resources available to any centre. These tasks may also be set within overarching scenarios and briefs more relevant to centres' own environment and targeted at their particular cohorts of candidates.

Each controlled assessment theme (see Appendix A) includes a number of starting points which indicate the type and degree of contextualisation that is allowed. Controlled assessment themes **must not** be changed by centres. When contextualising starting points centres must be careful not to make changes which could put at risk the opportunity for candidates to meet the assessment criteria, including the chance to gain marks at the highest level.

The same OCR controlled assessment task must NOT be used as practice material and then as the actual live assessment material. Centres should devise their own practice material using the OCR specimen controlled assessment materials as guidance.

Teachers **can**:

- explain the task
- advise on how the task could be approached
- advise on resources
- alert the candidate to key things that must be included in the final piece of work.

Teachers **must not**:

- comment on or correct the work
- practise the task with the candidates
- provide templates, model answers or feedback on drafts.

4.2 Planning and managing controlled assessment

Controlled assessment tasks are available at an early stage to allow planning time. It is anticipated that candidates will spend a total of about 20 hours in producing the work for unit A531 and about 20 hours in producing the work for unit A533. Candidates should be allowed sufficient time to complete the tasks.

Suggested steps are included below, with guidance on regulatory controls at each step of the process. Teachers must ensure that the control requirements indicated below are met throughout the process.

4.2.1 Preparation and research time

Preparation (informal supervision)

Informal supervision ensures that the work of the individual candidates is recorded accurately and that plagiarism does not take place. Assessable outcomes may be informed by group work, but must be an individual response.

- introduction to the task (teacher led) **1 hour**

Includes choice of tasks, possible approaches and sources of evidence, time allocations, programmes of work and deadlines, methods of working, control requirements.

Research (limited supervision)

Limited supervision means that candidates can undertake this part of the process without direct teacher supervision and outside the centre as required. Candidates are also able to work in collaboration during this stage. However, when producing their final piece of work, candidates must complete and/or evidence all work individually.

- introduction to the task (teacher led) **1 hour**

During the research phase candidates can be given support and guidance.

Research material can include fieldwork, internet or paper-based research, questionnaires, audio and video files etc. Candidates must be guided on the use of information from other sources to ensure that confidentiality and intellectual property rights are maintained at all times. It is essential that any material directly used from a source is appropriately and rigorously referenced.

4.2.2 Producing the final piece of work (formal supervision)

Formal supervision means under direct teacher supervision: the teacher must be able to authenticate the work and insist on acknowledgement and referencing of any sources used. Writing up is likely to be carried out over several sessions. Work must be collected and kept secure between sessions.

When supervising tasks, teachers are expected to:

- exercise continuing supervision of work in order to monitor progress and to prevent plagiarism
- exercise continuing supervision of practical work to ensure essential compliance with Health and Safety requirements
- ensure that the work is completed in accordance with the specification requirements and can be assessed in accordance with the specified marking criteria and procedures.

Candidates must work independently to produce their own final piece of work.

4.2.3 Presentation of the final piece of work

Candidates must observe the following procedures when producing their final piece of work for the controlled assessment tasks:

- tables, graphs and spreadsheets may be produced using appropriate ICT. These should be inserted into the report at the appropriate place
- any copied material must be suitably acknowledged
- quotations must be clearly marked and a reference provided wherever possible
- work submitted for moderation or marking must include a coversheet giving the following information:
 - centre number
 - centre name
 - candidate number
 - candidate name
 - unit code and title
 - assignment title.

Work submitted in digital format (CD or online) for moderation or marking must be in a suitable file structure as detailed in (Appendix B) at the end of this specification. Work submitted on paper must be secured by treasury tags or other suitable methods.

4.3 Marking and moderating controlled assessment

All controlled assessment units are marked by the centre assessor(s) using OCR marking criteria and guidance and are moderated by the OCR-appointed moderator. External moderation is either e-moderation where evidence is online or postal moderation.

4.3.1 Applying the marking criteria

The starting point for marking the tasks is the marking criteria (see section 4.3.4 *Marking criteria for controlled assessments* tasks). The criteria identify levels of performance for the skills, knowledge and understanding that the candidate is required to demonstrate. Before the start of the course, and for use at INSET training events, OCR provides exemplification through real or simulated candidate work which will help to clarify the level of achievement the assessors should be looking for when awarding marks.

4.3.2 Use of 'best fit' approach to marking criteria

The assessment task(s) for each unit should be marked by teachers according to the given marking criteria within the relevant unit using a 'best fit' approach. For each of the assessment criteria, teachers select one of the three band descriptors provided in the marking grid that most closely describes the quality of the work being marked.

Marking should be positive, rewarding achievement rather than penalising failure or omissions. The award of marks **must be** directly related to the marking criteria.

Teachers use their professional judgement in selecting the band descriptor that best describes the work of the candidate.

To select the most appropriate mark within the band descriptor, teachers should use the following guidance:

- where the candidate's work *convincingly* meets the statement, the highest mark should be awarded
- where the candidate's work *adequately* meets the statement, the most appropriate mark in the middle range should be awarded
- where the candidate's work *just* meets the statement, the lowest mark should be awarded.

Teachers should use the full range of marks available to them and award *full* marks in any band for work which fully meets that descriptor. This is work which is 'the best one could expect from candidates working at that level'. Where there are only two marks within a band the choice will be between work which, in most respects, meets the statement and work which just meets the statement. For wider mark bands the marks on either side of the middle mark(s) for 'adequately met' should be used where the standard is lower or higher than 'adequate' but **not** the highest or lowest mark in the band.

Only one mark per assessment criteria will be entered. The final mark for the candidate for the controlled assessment unit is out of a total of 60 and is found by totalling the marks for each of the marking criteria strands.

There should be clear evidence that work has been attempted and some work produced. If a candidate submits no work for the internally assessed units, then the candidate should be indicated as being absent from that unit. If a candidate completes any work at all for an internally assessed unit, then the work should be assessed according to the marking criteria and the appropriate mark awarded, which may be zero.

4.3.3 Annotation of candidates' work

Each piece of internally assessed work should show how the marks have been awarded in relation to the marking criteria.

The writing of comments on candidates' work, and coversheet, provides a means of communication between teachers during the internal standardisation and with the moderator if the work forms part of the moderation sample.

4.3.4 Marking criteria for controlled assessment tasks

Marking Criteria for Controlled Assessment: Unit A531

0 marks = no response or no response worthy of credit

Unit A531: CREATIVITY

Basic ability	Sound ability	High ability
<ul style="list-style-type: none"> Demonstrates limited knowledge and understanding of the principles of good design and shows limited awareness of the user. Identifies basic trends in existing products and uses this limited understanding in a design context. 	<ul style="list-style-type: none"> Demonstrates sound knowledge and understanding of the principles of good design and can relate products to users' needs. Identifies and demonstrates the significance of trends in existing products; interpret and apply this sound understanding in a design context. 	<ul style="list-style-type: none"> Demonstrates and applies detailed knowledge and understanding of the principles of good design and clearly relates products to users' needs and wants. (AO1) Identifies and demonstrates a thorough understanding of the significance of trends in existing products; reinterprets and applies this thorough understanding in imaginative ways. (AO1)
[1–3]	[4–7]	[8–10]

Unit A531: DESIGNING

Basic ability	Sound ability	High ability
<ul style="list-style-type: none"> Provides a limited response to a brief and produces a basic specification for a prototype product. Produces basic design ideas and communicates these by using a limited range of skills and techniques including the use of ICT. Uses drawing and annotation to communicate limited details of the design chosen for prototype production. 	<ul style="list-style-type: none"> Provides an appropriate response to a brief and produces a sound specification for a prototype product. Produces a sound range of creative design ideas and communicates these by using appropriate skills and techniques including the use of ICT. Uses drawing and annotation to communicate adequate details of the design chosen for prototype production. 	<ul style="list-style-type: none"> Provides an appropriate, detailed and considered response to a brief and produces a thorough specification for a prototype product. (AO2) Produces a comprehensive range of creative original and developed design ideas and communicates these using appropriate skills and techniques including the use of ICT. (AO2) Uses drawing and annotation to clearly communicate full details of the design chosen for prototype production. (AO2)
[1–4]	[5–10]	[11–14]

Unit A531: MAKING

Basic ability	Sound ability	High ability
<ul style="list-style-type: none"> • Uses limited modelling to identify problems and considers the suitability of the product for the user. • Plans and organises basic activities. • Selects and uses materials that are not always appropriate. • Selects and uses tools and equipment that are not always appropriate. • Works safely but with limited competence to produce a low quality prototype. • Surface graphics demonstrate a basic level of competence. • Uses workshop/design studio facilities as instructed to realise the prototype product. 	<ul style="list-style-type: none"> • Uses some modelling to identify problems and considers the suitability of the product for the user. • Plans and organises sound activities. • Selects and uses materials that are mostly appropriate. • Selects and uses tools and equipment that are mostly appropriate. • Works safely and effectively with a sound level of competence to produce a good quality prototype. • Surface graphics are adequate and demonstrate a sound level of competence. • Selects and uses workshop/design studio facilities that are mostly appropriate to realise the prototype product. 	<ul style="list-style-type: none"> • Uses extensive modelling to identify problems and make appropriate modifications, assesses the suitability of the product considering, in detail, the needs of the user. • Plans and organises complex activities. • Selects and uses materials that are consistently appropriate. (AO1) • Selects and uses tools and equipment that are consistently appropriate. (AO1/AO2) • Works consistently safely, skilfully and competently to produce a high-quality prototype. (AO2) • Surface graphics are appropriate and demonstrate a high level of competence. • Consistently selects and uses workshop/design studio facilities appropriately to realise the prototype product. (AO1/AO2)
[1–6]	[7–13]	[14–20]
<ul style="list-style-type: none"> • Demonstrates limited practical understanding and ability in solving a technical problem as it arises. 	<ul style="list-style-type: none"> • Demonstrates a sound practical understanding and ability in solving technical problems as they arise. 	<ul style="list-style-type: none"> • Demonstrates a thorough practical understanding and ability in solving technical problems effectively and efficiently as they arise. (AO2)
[1]	[2–3]	[4]
<ul style="list-style-type: none"> • Records the creation of the prototype by providing limited notes and visual evidence. 	<ul style="list-style-type: none"> • Records key stages involved in the creation of the prototype by providing sound notes and visual evidence. 	<ul style="list-style-type: none"> • Records key stages involved in the creation of the prototype by providing comprehensive notes and visual evidence. (AO2)
[1]	[2–3]	[4]

Unit A531: CRITICAL EVALUATION

Basic ability	Sound ability	High ability
<ul style="list-style-type: none"> • Basic evaluation of the modelling and prototyping process with limited reflection on how to improve the modelling and prototyping process. • Limited use of specialist terms. • Answers may be ambiguous or disorganised. • Errors of spelling, punctuation and grammar may be intrusive. 	<ul style="list-style-type: none"> • Sound evaluation of the making process, which reflects on how to improve the modelling and prototyping process. • Some use of specialist terms, although these may not always be used appropriately. • Information presented for the most part in a structured format. • Occasional errors in spelling, punctuation and grammar that do not impede communication. 	<ul style="list-style-type: none"> • Critical evaluation of the processes involved in designing and making the prototype which reflects and suggests modifications to improve the modelling and prototyping process. (AO3) • Specialist terms are consistently used appropriately and correctly. • Information consistently presented in a structured format. • Consistently accurate use of spelling, punctuation and grammar.
[1–2]	[3–5]	[6–8]

Marking Criteria for Controlled Assessment: Unit A533

0 marks = no response or no response worthy of credit

Unit A533: DESIGNING

Basic ability	Sound ability	High ability
<ul style="list-style-type: none"> Provides a limited response to a brief and produces a basic specification for a prototype product. 	<ul style="list-style-type: none"> Provides an appropriate response to a brief and produces a sound specification for a prototype product as a result of analysis. 	<ul style="list-style-type: none"> Provides an appropriate, detailed and considered response to a brief and produces a detailed specification for a prototype product as a result of analysis. (AO2)
[1]	[2–3]	[4]
<ul style="list-style-type: none"> Produces basic design ideas and communicates these by using appropriate skills and techniques including the use of ICT. Uses drawing and annotation to communicate limited details of the chosen design proposal. 	<ul style="list-style-type: none"> Produces a sound range of creative ideas and communicates these by using appropriate skills and techniques including the use of ICT. Uses drawing and annotation to communicate adequate details of the chosen design proposal. 	<ul style="list-style-type: none"> Produces a wide range of creative original ideas and develops design and communicates these using appropriate skills and techniques including the use of ICT. (AO2) Uses drawing and annotation to clearly communicate full details of the chosen design proposal.
[1–5]	[6–8]	[9–12]

Unit A533: MAKING

Basic ability	Sound ability	High ability
<ul style="list-style-type: none"> Plans and organises basic activities. Limited modelling of the final product to assess suitability of the product and considers the needs of the user. Selects and uses materials that are not always appropriate. Selects and uses hand and machine tools that are not always appropriate. Works safely but with limited competence to shape, form, assemble and finish materials or components as appropriate. Uses workshop/design studio facilities as instructed. The product is of a low quality and may not be successfully completed. Surface graphics demonstrate a basic level of competence. 	<ul style="list-style-type: none"> Plans and organises sound activities. Uses some modelling to assess suitability of the product and considers the needs of the user. Selects and uses materials that are mostly appropriate. Selects and uses hand and machine tools that are mostly appropriate. Works safely and effectively with a sound level of competence to shape, form, assemble and finish materials or components as appropriate. Selects and uses workshop facilities that are mostly appropriate. The completed product is of a good quality and meets most of the requirements of the final product specification. Surface graphics are adequate and demonstrate a sound level of competence. 	<ul style="list-style-type: none"> Plans and organises complex activities. Uses extensive modelling to assess the suitability of the product against the user's needs, identifies problems and makes appropriate modifications. Selects and uses materials that are consistently appropriate. (AO2) Selects and uses hand and machine tools that are consistently appropriate. (AO2) Works consistently safely, skilfully and competently to shape, form, assemble and finish materials or components as appropriate. (AO2) The completed product is of a high quality and fully meets the requirements of the final product specification. (AO2) Surface graphics are appropriate and demonstrate a high level of competence.
[1–9]	[10–17]	[18–24]
<ul style="list-style-type: none"> Demonstrates limited practical understanding and ability in solving a technical problem as it arises. 	<ul style="list-style-type: none"> Demonstrates a sound practical understanding and ability in solving technical problems as they arise. 	<ul style="list-style-type: none"> Demonstrates a thorough practical understanding and ability in solving technical problems effectively and efficiently as they arise.
[1–2]	[3–4]	[5–6]

Unit A533: MAKING

Basic ability	Sound ability	High ability
<ul style="list-style-type: none"> Records the making of the product by providing limited notes and photographic evidence. 	<ul style="list-style-type: none"> Records key stages involved in the making of the product by providing sound notes and photographic evidence. 	<ul style="list-style-type: none"> Records key stages involved in the making of the product by providing comprehensive notes and photographic evidence.
[1–2]	[3–4]	[5–6]

Unit A533: CRITICAL EVALUATION

Basic ability	Sound ability	High ability
<ul style="list-style-type: none"> Basic evaluation of the finished product with limited reference to the specification. Undertakes limited testing of the product with limited reflection on how to improve the product. Limited use of specialist terms. Answers may be ambiguous or disorganised. Errors of spelling, punctuation and grammar may be intrusive. 	<ul style="list-style-type: none"> Sound evaluation of the finished product with some reference to the specification. Undertakes some testing and reflects on how to improve the product. Some use of specialist terms, although these may not always be used appropriately. Information presented for the most part in a structured format. Occasional errors in spelling, punctuation and grammar that do not impede communication. 	<ul style="list-style-type: none"> Critical evaluation of the finished product against the specification. (AO3) Undertakes detailed testing; presents meaningful conclusions leading to proposals for modifications to improve the product. (AO3) Specialist terms consistently used appropriately and correctly. Information consistently presented in a structured format. Consistently accurate use of spelling, punctuation and grammar.
[1–2]	[3–5]	[6–8]

4.3.5 Authentication of work

Teachers must be confident that the work they mark is the candidate's own. This does not mean that a candidate must be supervised throughout the completion of all work but the teacher must exercise sufficient supervision, or introduce sufficient checks, to be in a position to judge the authenticity of the candidate's work.

Wherever possible, the teacher should discuss work-in-progress with candidates. This will not only ensure that work is underway in a planned and timely manner but will also provide opportunities for assessors to check authenticity of the work and provide general feedback.

Candidates must not plagiarise. Plagiarism is the submission of another's work as one's own and/or failure to acknowledge the source correctly. Plagiarism is considered to be malpractice and could lead to the candidate being disqualified. Plagiarism sometimes occurs innocently when candidates are unaware of the need to reference or acknowledge their sources. It is therefore important that centres ensure that candidates understand that the work they submit must be their own and that they understand the meaning of plagiarism and what penalties may be applied. Candidates may refer to research, quotations or evidence but they must list their sources. The rewards from acknowledging sources, and the credit they will gain from doing so, should be emphasised to candidates as well as the potential risks of failing to acknowledge such material. Candidates may be asked to sign a declaration to this effect. Centres should reinforce this message to ensure candidates understand what is expected of them.

Please note: Centres must confirm to OCR that the evidence produced by candidates is authentic. The Centre Authentication Form includes a declaration for assessors to sign and is available from the [OCR website](#) and [OCR Interchange](#).

4.3.6 Internal standardisation

It is important that all internal assessors, working in the same subject area, work to common standards. Centres must ensure that the internal standardisation of marks across assessors and teaching groups takes place using an appropriate procedure.

This can be done in a number of ways. In the first year, reference material and OCR training meetings will provide a basis for centres' own standardisation. In subsequent years, this, or centres' own archive material, may be used. Centres are advised to hold preliminary meetings of staff involved to compare standards through cross-marking a small sample of work. After most marking has been completed, a further meeting at which work is exchanged and discussed will enable final adjustments to be made.

4.3.7 Moderation

All work for controlled assessment is marked by the teacher and internally standardised by the centre. Marks are then submitted to OCR, after which moderation takes place in accordance with OCR procedures: refer to the OCR website for submission dates of the marks to OCR. The purpose of moderation is to ensure that the standard of the award of marks for work is the same for each centre and that each teacher has applied the standards appropriately across the range of candidates within the centre.

Each candidate's work should have a cover sheet attached to it with a summary of the marks awarded for the task in relation to the marking criteria defined in Section 4.3.4. If the work is to be submitted in digital format, this cover sheet should also be submitted electronically within each candidate's files.

4.4 Submitting the moderation samples via the OCR Repository

The OCR Repository is a secure website for centres to upload candidate work and for assessors to access this work digitally. Centres can use the OCR Repository for uploading marked candidate work for moderation.

Centres can access the OCR Repository via OCR Interchange, find their candidate entries in their area of the Repository, and use the Repository to upload files (singly or in bulk) for access by their moderator.

The OCR Repository allows candidates to send evidence in electronic file types that would normally be difficult to submit through postal moderation; for example multimedia and or other interactive unit submissions.

There are three ways to load files to the OCR Repository:

- 1 Centres can load multiple files against multiple candidates by clicking on 'Upload candidate files' in the Candidates tab of the Candidate Overview screen.
- 2 Centres can load multiple files against a specific candidate by clicking on 'Upload files' in the Candidate Details screen.
- 3 Centres can load multiple administration files by clicking on 'Upload admin files' in the Administration tab of the Candidate Overview screen.

The OCR Repository is seen as a faster, greener and more convenient means of providing work for assessment. It is part of a wider programme bringing digital technology to the assessment process, the aim of which is to provide simpler and easier administration for centres.

Instructions for how to upload files to OCR using the OCR Repository can be found on OCR [Interchange](#).

The OCR GCSE Design and Technology: Graphics units A531 and A533 can be submitted electronically to the OCR Repository via Interchange: please check Section 7.4.1 for unit entry codes for the OCR Repository.

5.1 Free resources available from the OCR website

The following materials will be available on the OCR website:

- GCSE Design and Technology: Graphics Specification
- [specimen assessment materials for each unit](#)
- [Guide to controlled assessment](#)
- [Teacher's Handbook](#)
- [sample schemes of work and lesson plans.](#)

5.2 Other resources

OCR offers centres a wealth of high quality published support with a choice of 'Official Publisher Partner' and 'Approved Publication' resources, all endorsed by OCR for use with OCR specifications.

5.2.1 Publisher partners

OCR works in close collaboration with publisher partners to ensure you have access to:

- published support materials available when you need them, tailored to OCR specifications
- high quality resources produced in consultation with OCR subject teams, which are linked to OCR's teacher support materials.



Hodder Education is the publisher partner for OCR GCSE Design and Technology: Graphics.

Hodder Education produces the following resources for OCR GCSE Design and Technology: Graphics:

- OCR Design and Technology for GCSE: Graphics Teacher Resource DVD-ROM
by Kevin Crampton ISBN: 9780340991220.
- OCR Design and Technology for GCSE: Graphics Student Book
by Kevin Crampton, Paul Brannlund, John Rolfe ISBN: 9780340981986

5.2.2 Endorsed publications

OCR endorses a range of publisher materials to provide quality support for centres delivering its qualifications. You can be confident that materials branded with OCR's 'Official Publishing Partner' or 'Approved publication' logos have undergone a thorough quality assurance process to achieve endorsement. All responsibility for the content of the publisher's materials rests with the publisher.



These endorsements do not mean that the materials are the only suitable resources available or necessary to achieve an OCR qualification.

5.3 Training

OCR will offer a range of support activities for all practitioners throughout the lifetime of the qualification to ensure they have the relevant knowledge and skills to deliver the qualification.

Please see [Event Booker](#) for further information.

5.4 OCR support services

5.4.1 Active Results

Active Results is available to all centres offering OCR's GCSE Design and Technology: Graphics specification.

The logo for Active Results, featuring the word 'active' in blue and 'results' in orange, with a checkmark symbol integrated into the 'i' of 'active'.

Active Results is a free results analysis service to help teachers review the performance of individual candidates or whole schools.

Data can be analysed using filters on several categories such as gender and other demographic information, as well as providing breakdowns of results by question and topic.

Active Results allows you to look in greater detail at your results:

- richer and more granular data will be made available to centres including question level data available from e-marking
- you can identify the strengths and weaknesses of individual candidates and your centre's cohort as a whole
- our systems have been developed in close consultation with teachers so that the technology delivers what you need.

Further information on Active Results can be found on the [OCR website](#).

5.4.2 OCR Interchange

OCR Interchange has been developed to help you to carry out day-to-day administration functions online, quickly and easily. The site allows you to register and enter candidates online. In addition, you can gain immediate and free access to candidate information at your convenience. Sign up on the [OCR website](#).

6.1 Equality Act information relating to GCSE Design and Technology: Graphics

GCSEs often require assessment of a broad range of competences. This is because they are general qualifications and, as such, prepare candidates for a wide range of occupations and higher level courses.

The revised GCSE qualification and subject criteria were reviewed by the regulators in order to identify whether any of the competences required by the subject presented a potential barrier to any disabled candidates. If this was the case, the situation was reviewed again to ensure that such competences were included only where essential to the subject. The findings of this process were discussed with disability groups and with disabled people.

Reasonable adjustments are made for disabled candidates in order to enable them to access the assessments and to demonstrate what they know and can do. For this reason, very few candidates will have a complete barrier to the assessment. Information on reasonable adjustments is found in *Access Arrangements, Reasonable Adjustments and Special Consideration* by the Joint Council www.jcq.org.uk.

Candidates who are unable to access part of the assessment, even after exploring all possibilities through reasonable adjustments, may still be able to receive an award based on the parts of the assessment they have taken.

The access arrangements permissible for use in this specification are in line with Ofqual's GCSE subject criteria equalities review and are as follows:

	Yes/No	Type of Assessment
Readers	Y	All written and practical assessments
Scribes	Y	All written and practical assessments
Practical assistants	Y	Practical assessments
Word processors	Y	All written and practical assessments
Transcripts	Y	All written and practical assessments
Oral language modifiers	Y	All written and practical assessments
BSL signers	Y	All written and practical assessments
Modified question papers	Y	All written and practical assessments
Extra time	Y	All written and practical assessments

We do not foresee any part of the assessment forming a barrier to any student. There are Design and Technology endorsements which will pose barriers for some disabled candidates.

Candidates with a physical disability may be limited in the range of designing and making contexts they can use, but this should not pose a barrier to assessment. For example, candidates may use CAD/CAM for the making process and practical assistants may be used to support students with physical disabilities in this process.

Candidates with a visual impairment may find elements of the assessment difficult, such as when designing; however, there should be no barriers to assessment.

It is important to note that where access arrangements are permitted, they must not be used in a way that undermines the integrity of the assessment. For example, practical assistants can be used to help learners set up but cannot help perform skills which are assessed, such as the ability to physically manipulate equipment.

6.2 Arrangements for candidates with particular requirements (including Special Consideration)

All candidates with a demonstrable need may be eligible for access arrangements to enable them to show what they know and can do. The criteria for eligibility for access arrangements can be found in the JCQ document *Access Arrangements, Reasonable Adjustments and Special Consideration*.

Candidates who have been fully prepared for the assessment but who have been affected by adverse circumstances beyond their control at the time of the examination may be eligible for special consideration. As above, centres should consult the JCQ document *Access Arrangements, Reasonable Adjustments and Special Consideration*.

Administration of GCSE Design and Technology: Graphics

7

In December 2011 the GCSE qualification criteria were changed by Ofqual. As a result, all GCSE qualifications have been updated to comply with the new regulations.

The most significant change for all GCSE qualifications is that, from 2014, unitised specifications must require that 100% of the assessment is terminal.

Please note that there are no changes to the terminal rule and re-sit rules for the January 2013 and June 2013 examination series:

- at least 40% of the assessment must be taken in the examination series in which the qualification is certificated
- candidates may re-sit each unit once before certification, i.e. each candidate can have two attempts at a unit before certification.

For full information on the assessment availability and rules that apply in the January 2013 and June 2013 examination series, please refer to the previous version of this specification [GCSE Design and Technology: Graphics July 2009](#) available on the website.

The sections below explain in more detail the rules that apply from the June 2014 examination series onwards.

7.1 Availability of assessment from 2014

There is one examination series available each year in June (all units are available each year in June).

GCSE Design and Technology: Graphics certification is available in June 2014 and each June thereafter.

	Unit A531	Unit A533	Unit A535	Certification availability
June 2014	✓	✓	✓	✓
June 2015	✓	✓	✓	✓

7.2 Certification rules

For GCSE Design and Technology: Graphics from June 2014 onwards, a 100% terminal rule applies. Candidates must enter for all their units in the series in which the qualification is certificated.

7.3 Rules for re-taking a qualification

Candidates may enter for the qualification an unlimited number of times.

Where a candidate re-takes a qualification, **all** units must be re-entered and all externally assessed units must be re-taken in the same series as the qualification is re-certificated. The new results for these units will be used to calculate the new qualification grade. Any results previously achieved cannot be re-used.

For each of the controlled assessment units, candidates who are re-taking a qualification can choose either to re-take that controlled assessment unit or to carry forward the result for that unit that was used towards the previous certification of the same qualification:

- where a candidate decides to re-take the controlled assessment, the new result will be the one used to calculate the new qualification grade. Any results previously achieved cannot be re-used
- where a candidate decides to carry forward a result for controlled assessment, they must be entered for the controlled assessment unit in the re-take series using the entry code for the carry forward option (see section 7.4).

7.4 Making entries

7.4.1 Unit entries

Centres must be approved to offer OCR qualifications before they can make any entries, including estimated entries. It is recommended that centres apply to OCR to become an approved centre well in advance of making their first entries. Centres must have made an entry for a unit in order for OCR to supply the appropriate forms and administrative materials.

It is essential that correct unit entry codes are used when making unit entries.

For the controlled assessment units, centres can decide whether they want to submit candidates' work for moderation through the OCR Repository or by post. Candidates submitting controlled assessment must be entered for the appropriate unit entry code from the table below. Candidates who are re-taking the qualification and who want to carry forward the controlled assessment should be entered using the unit entry code for the carry forward option.

Centres should note that controlled assessment tasks can still be completed at a time which is appropriate to the centre/candidate. However, where tasks change from year to year, centres would have to ensure that candidates had completed the correct task(s) for the year of entry.

Unit entry code	Component code	Assessment method	Unit titles
A531A	01	Moderated via OCR Repository	<i>Introduction to designing and making - Graphics</i>
A531B	02	Moderated via postal moderation	<i>Introduction to designing and making - Graphics</i>
A531C	80	Carried forward	<i>Introduction to designing and making - Graphics</i>
A533A	01	Moderated via OCR Repository	<i>Making quality products - Graphics</i>
A533B	02	Moderated via postal moderation	<i>Making quality products - Graphics</i>
A533C	80	Carried forward	<i>Making quality products - Graphics</i>
A535	01	Written paper	<i>Sustainability and technical aspects of designing and making - Graphics</i>

7.4.2 Certification entries

Candidates must be entered for qualification certification separately from unit assessment(s). If a certification entry is **not** made, no overall grade can be awarded.

Centres must enter candidates for:

- GCSE Design and Technology: Graphics certification code J303

7.5 Enquiries about results

Under certain circumstances, a centre may wish to query the result issued to one or more candidates. Enquiries about results for GCSE units must be made immediately following the series in which the relevant unit was taken and by the relevant enquiries about results deadline for that series.

Please refer to the *JCQ Post-Results Services* booklet and the *OCR Admin Guide: 14–19 Qualifications* for further guidance on enquiries about results and deadlines. Copies of the latest versions of these documents can be obtained from the OCR website at www.ocr.org.uk.

7.6 Prohibited qualifications and classification code

Every specification is assigned a national classification code indicating the subject area to which it belongs. The classification code for this specification is 9030.

Centres should be aware that candidates who enter for more than one GCSE qualification with the same classification code will have only one grade (the highest) counted for the purpose of the School and College Performance Tables.

Centres may wish to advise candidates that, if they take two specifications with the same classification code, colleges are very likely to take the view that they have achieved only one of the two GCSEs. The same view may be taken if candidates take two GCSE specifications that have different classification codes but have significant overlap of content. Candidates who have any doubts about their subject combinations should seek advice, either from their centre or from the institution to which they wish to progress.

8 Other information about GCSE Design and Technology: Graphics

8.1 Overlap with other qualifications

There is no significant overlap between the content of these specifications and that for other GCSE qualifications.

8.2 Progression from this qualification

GCSE qualifications are general qualifications that enable candidates to progress either directly to employment, or to proceed to further qualifications.

Progression to further study from GCSE will depend upon the number and nature of the grades achieved. Broadly, candidates who are awarded mainly Grades D–G at GCSE could either strengthen their base through further study of qualifications at Level 1 within the National Qualifications Framework or could proceed to Level 2. Candidates who are awarded mainly Grades A*–C at GCSE would be well prepared for study at Level 3 within the National Qualifications Framework.

Candidates may progress to GCE in Design and Technology or the Principle Learning in Engineering. This specification also provides progression from the Entry Level Certificate in Graphic Products.

8.3 Avoidance of bias

OCR has taken great care in preparation of this specification and assessment materials to avoid bias of any kind. Special focus is given to the 9 strands of the Equality Act with the aim of ensuring both direct and indirect discrimination is avoided.

8.4 Regulatory requirements

This specification complies in all respects with the current: *General Conditions of Recognition; GCSE, GCE, Principal Learning and Project Code of Practice; GCSE controlled assessment regulations* and the *GCSE subject criteria for GCSE Design and Technology*. All documents are available on the [Ofqual website](#).

8.5 Language

This specification and associated assessment materials are in English only. Only answers written in English will be assessed.

8.6 Spiritual, moral, ethical, social, legislative, economic and cultural issues

This specification offers opportunities which can contribute to an understanding of these issues in the following topics:

- engage in imaginative and creative activity in their own practical controlled assessment and develop an appreciation of the imagination and creativity of others in Design and Technology
- recognise there are moral, cultural, economic, environmental and sustainability issues inherent in Design and Technology
- the moral implications of some applications of technological activities
- the relationship between cultures and societies and the influence they have on designing and making and that products have an impact on lifestyle
- develop an understanding of the role of the Technology in the context of national and European citizenship.

There are no direct references to spiritual issues within these specifications. However, opportunities may exist to explore this area through the designing and making of products that relate to a religious or spiritual context.

8.7 Sustainable development, health and safety considerations and European developments, consistent with international agreements

This specification supports these issues, consistent with current EU agreements, as outlined below:

- design and technology activities are global and not solely restricted to Europe. Design and making responses are multicultural and arise from identifiable needs and opportunities. These specifications do not make specific reference to European Developments; however, it may be drawn into the course of study in many ways, e.g. European Safety Standards
- encourage candidates to look at emerging and existing technologies in other European countries and the world
- ways in which economic, environmental, ethical and social dimensions interact to influence designing and making
- encourage candidates to consider health and safety when working with tools, equipment, components and materials
- encourage candidates to consider sustainability in making decisions and combining skills with knowledge and understanding in order to design and make quality products.

8.8 Key Skills

This specification provides opportunities for the development of the Key Skills of *Communication*, *Application of Number*, *Information and Communication Technology*, *Working with Others*, *Improving Own Learning and Performance* and *Problem Solving* at Levels 1 and/or 2. However, the extent to which this evidence fulfils the Key Skills criteria at these levels will be totally dependent on the style of teaching and learning adopted for each unit.

The following table indicates where opportunities may exist for at least some coverage of the various Key Skills criteria at Levels 1 and/or 2 for each unit.

Unit	C		AoN		ICT		WwO		IoLP		PS	
	1	2	1	2	1	2	1	2	1	2	1	2
A521	✓	✓			✓	✓	✓		✓	✓	✓	✓
A523	✓	✓			✓	✓			✓	✓	✓	✓
A525	✓	✓	✓	✓	✓	✓	✓		✓	✓	✓	✓

8.9 ICT

In order to play a full part in modern society, candidates need to be confident and effective users of ICT. This specification provides candidates with a wide range of appropriate opportunities to use ICT in order to further their study of Design and Technology: Graphics.

Opportunities for ICT include:

- use of CAD and CAM where appropriate
- gathering information from the World Wide Web and CD-ROMs
- using software to process data
- using software to present ideas and information on paper and on screen.

8.10 Citizenship

From September 2002, the National Curriculum for England at Key Stage 4 includes a mandatory programme of study for Citizenship.

There are opportunities for developing knowledge, skills and understanding of citizenship issues particularly in Units A531 and A533.

Appendix A: Controlled Assessment Themes – Unit A531 and Unit A533

Unit A531

The task for this unit is for the candidate to produce a prototype product, capable of being evaluated and a concise portfolio of work to support the designing and modelling process.

Candidates **must** select one of the following themes as a starting point for the task.

Centres are permitted to contextualise the theme and starting point appropriately to reflect centre or community resource and access to local business and industry that may add realism to the candidates' work.

Teachers are required to ensure that candidates do not pursue the same 'theme' for their work as submitted or intended for submission for Unit A533.

Teachers must mark the task using the marking criteria provided in section 4.3.4 (Unit A531) of this specification.

In order to skilfully design and make their prototype product, candidates should refer to the content of Unit A535 and use designing, planning, making, materials, tools, equipment and processes as appropriate.

Theme	Starting point
Promotional items	A freebie/give-away item that could be a calendar, pop-up mailers, direct mail, stamps to promote a significant event, concert/theatre promotion.
Corporate/Brand Identity	A range of items that could include company/brand logo, business cards, letterheads, company livery, promotional items, uniforms, menus, corporate gifts, bags.
Signs and Display	Situations could include exhibitions, estate agents, retail stores, sporting events, museums, libraries, temporary direction signs/information signs.
Visual Communication	Wordless signs that can be understood in any language/culture, visual instructions for emergency situations (e.g. in the event of a fire), children's party invitations, range of greeting cards.
Travel and Tourism	Airline promotion (tickets, baggage, brochure, emergency situation instructions, etc), travel company direct mail, visitor centre information, theme park/underground train maps.
Retail Environment	Game/CD/DVD Sleeve/inserts, Fairtrade In-Store promotion/product, Mobile phone/iPod/MP3 promotion.
Food and Drink	Products that can be flat packed including fast food/convenience packaging, wraparound labels, cartons, drink/food carrier, and disposable cup sleeves.
Education	Visual aid(s) for primary school children to teach them about recycling, teaching aid(s) to develop language skills.

Unit A533

The task for this unit is for the candidate to design and manufacture a product. The starting point for this task **must** be selected from a theme set by OCR and listed below.

Centres are permitted to contextualise the theme and starting point appropriately to reflect centre or community resource and access to local business and industry that may add realism to the candidates' work.

The task can be linked to a candidate's interest or such other influences as competitions, commerce or the community.

Selection of an appropriate theme for the task will be made by candidate and centre, taking account of constraints relating to resources and time available for completion of the task.

Teachers are required to ensure that candidates do not pursue the same 'theme' for their work as submitted or intended for submission for Unit A531.

Teachers must mark the task using the marking criteria provided in section 4.3.4 (Unit A533) of this specification.

In order to skilfully design and make their product, candidates should refer to the content of Unit A535 and use designing, planning, making, materials, tools, equipment and process as appropriate.

Themes	Starting point
Promotional Mobile	A promotional '3D mobile' as a novelty item to promote and/or raise awareness of a specific organisation or issue.
Packaging	An item of attractive and protective packaging for a specific three-dimensional product.
'Press-out' Model	A range of children's books is being launched. Each book contains a specific press-out item that can be assembled without the use of adhesives or scissors.
Theatre or Concert staging	A stage or studio set design for a specific production.
Exhibition stands	An innovative and eye-catching exhibition stand for a specific organisation to display a new product.
'Pop-up' Book	An educational book for children incorporating a range of different and interesting 'pop-up' mechanisms.
Modern Architectural Building	Docklands in London is home to some of the UK's most interesting and innovative buildings. Design a modern office block, school, shopping centre or other large building for a modern city.
Point of Sale Display	An eye-catching and effective method of displaying and promoting a new product to people.
Flat pack Carrying Aids	A flat pack carrying aid that allows a number of potentially difficult items to be carried easily in one hand.
Recycling/Sustainability	Choose an existing graphic product that is difficult to recycle. Re-design it to make it recyclable/reusable.

Appendix B: Guidance for the production of electronic controlled assessment

B

Structure for evidence

A controlled assessment portfolio is a collection of folders and files containing the candidate's evidence. Folders should be organised in a structured way so that the evidence can be accessed easily by a teacher or moderator. This structure is commonly known as a folder tree. It would be helpful if the location of particular evidence is made clear by naming each file and folder appropriately and by use of an index called 'Home Page'.

There should be a top level folder detailing the candidate's centre number, candidate number, surname and forename, together with the code A531 or A533, so that the portfolio is clearly identified as the work of one candidate.

Each candidate produces an assignment for controlled assessment. The evidence should be contained within a separate folder within the portfolio. This folder may contain separate files.

Each candidate's controlled assessment portfolio should be stored in a secure area on the centre's network. Prior to submitting the controlled assessment portfolio to OCR, the centre should add a folder to the folder tree containing controlled assessment and summary forms.

Data formats for evidence

In order to minimise software and hardware compatibility issues it will be necessary to save candidates' work using an appropriate file format.

Candidates must use formats appropriate to the evidence that they are providing and appropriate to viewing for assessment and moderation. Open file formats or proprietary formats for which a downloadable reader or player is available are acceptable. Where this is not available, the file format is not acceptable.

Electronic controlled assessment is designed to give candidates an opportunity to demonstrate what they know, understand and can do using current technology. Candidates do not gain marks for using more sophisticated formats or for using a range of formats. A candidate who chooses to use only word documents will not be disadvantaged by that choice.

Evidence submitted is likely to be in the form of word processed documents, PowerPoint presentations, digital photos and digital video.

To ensure compatibility, all files submitted must be in the formats listed below. Where new formats become available that might be acceptable, OCR will provide further guidance. OCR advises against changing the file format that the document was originally created in. It is the centre's responsibility to ensure that the electronic portfolios submitted for moderation are accessible to the moderator and fully represent the evidence available for each candidate.

Accepted File Formats

Movie formats for digital video evidence

MPEG (*.mpg)

QuickTime movie (*.mov)

Macromedia Shockwave (*.aam)

Macromedia Shockwave (*.dcr)

Flash (*.swf)

Windows Media File (*.wmf)

MPEG Video Layer 4 (*.mp4)

Audio or sound formats

MPEG Audio Layer 3 (*.mp3)

Graphics formats including photographic evidence

JPEG (*.jpg)

Graphics file (*.pcx)

MS bitmap (*.bmp)

GIF images (*.gif)

Animation formats

Macromedia Flash (*.fla)

Structured markup formats

XML (*.xml)

Text formats

Comma Separated Values (.csv)

PDF (.pdf)

Rich text format (.rtf)

Text document (.txt)

Microsoft Office suite

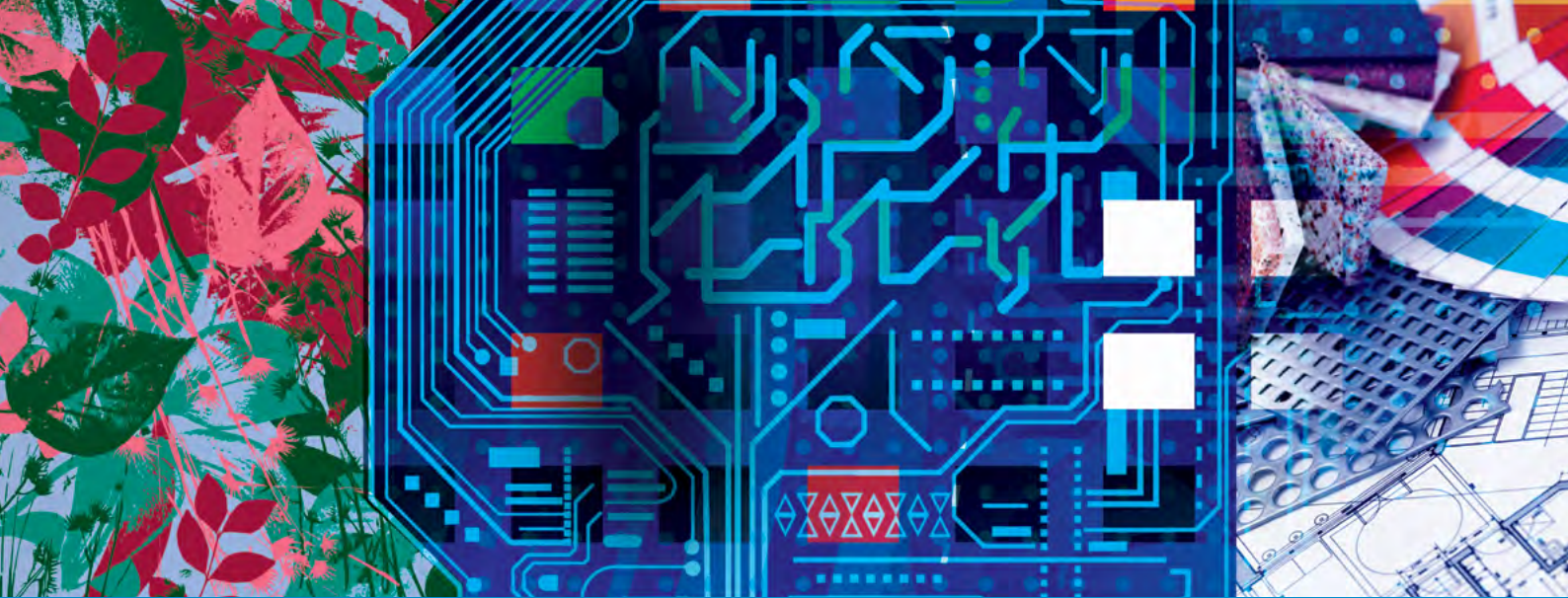
PowerPoint (.ppt)

Word (.doc)

Excel (.xls)

Visio (.vsd)

Project (.mpp)



YOUR CHECKLIST

Our aim is to provide you with all the information and support you need to deliver our specifications.

- Bookmark www.ocr.org.uk/gcse2012
- Be among the first to hear about support materials and resources as they become available. Register for email updates at www.ocr.org.uk/updates.
- Book your inset training place online at www.ocreventbooker.org.uk
- Learn more about active results at www.ocr.org.uk/activeresults
- Join our design and technology social network community for teachers at www.social.ocr.org.uk

NEED MORE HELP?

Here's how to contact us for specialist advice:

Phone: **01223 553998**

Email: general.qualifications@ocr.org.uk

Online: <http://answers.ocr.org.uk>

Fax: **01223 552627**

Post: **Customer Contact Centre, OCR, Progress House,
Westwood Business Park, Coventry CV4 8JQ**

WHAT TO DO NEXT

Become an approved OCR centre – if your centre is completely new to OCR and has not previously used us for any examinations, visit www.ocr.org.uk/centreapproval to become an approved OCR centre.

Contact us

Keep up to date with the latest news by registering to receive e-alerts at www.ocr.org.uk/updates

Telephone 01223 553998

Facsimile 01223 552627

Email general.qualifications@ocr.org.uk

