

OCR

Oxford Cambridge and RSA

15 March – 15 May 2016

AS GCE FRENCH

F701 Speaking

ROLE PLAY A



- This Candidate's Sheet is to be handed to the candidate 20 minutes in advance.

INFORMATION FOR CANDIDATES

- You should use the time available to study the instructions overleaf. You may make notes on this sheet, which you should take into the examination room with you.
- When the test begins you will be asked:
 - (i) to carry out the task described overleaf
 - (ii) to discuss with the examiner the sub-topic which you have prepared. The topic must refer to France or a French-speaking country.
- You may **not** use a dictionary.

There are two sections to this examination:

- | | |
|--------------------------------|------------|
| A Role play (5–6 mins) | [30 Marks] |
| B Topic discussion (9–10 mins) | [30 Marks] |

- Candidates may bring into the examination a maximum of one side of A4 notes for the Topic discussion.

ROLE PLAY A – CANDIDATE’S SHEET

Note to the candidate: You should begin by asking the two questions. The task can then be completed in the order you prefer. You should base your replies on the English text, but sometimes you will need to use your imagination and initiative to react to the examiner’s comments and questions.

La Situation

Un(e) collègue français(e) de votre mère est venu(e) dîner chez vous.

La Tâche

Vous discutez avec le / la collègue et vous parlez de ses enfants.

D’abord vous devez vous renseigner sur :

1 ce qu’il / elle fait en Grande-Bretagne

2 les intérêts de ses enfants

Vous avez un dépliant sur un stage d’été de danse et vous pensez que cela pourrait lui être utile. À l’aide du dépliant, vous donnerez des détails sur :

- ce que le stage d’été offre
- une journée typique
- les participants
- le lieu et les dates du stage
- le coût du stage
- le site web

Au cours de la conversation vous discuterez aussi :

- d’un stage d’été que vous aimeriez faire
- des raisons pour lesquelles il est important que les jeunes aient des passe-temps

Dance Summer School

The Dunmore Dance Summer School offers the opportunity to improve your technique with dynamic teachers and work every day with professional dancers. At the end of the week there will be a dance show where your parents and friends can see what you have learnt.

A typical day

MORNING: choice of classes – ballet, contemporary dance, etc

AFTERNOON: group work to prepare for the show

EVENING: relax with other students and a variety of fun activities



Participants must be between 13 and 18 years of age. Students will be grouped according to ability, and must be a member of a dance school. The course is not suitable for beginners.

The course takes place in Leicester from 15–22 August.

Cost of £525 includes all meals, accommodation in shared bedrooms with en-suite bathroom, tuition and colourful costumes. 10% discount for returning participants.

See the website for more details and photographs from last year's course.

**Copyright Information**

OCR is committed to seeking permission to reproduce all third-party content that it uses in its assessment materials. OCR has attempted to identify and contact all copyright holders whose work is used in this paper. To avoid the issue of disclosure of answer-related information to candidates, all copyright acknowledgements are reproduced in the OCR Copyright Acknowledgements Booklet. This is produced for each series of examinations and is freely available to download from our public website (www.ocr.org.uk) after the live examination series.

If OCR has unwittingly failed to correctly acknowledge or clear any third-party content in this assessment material, OCR will be happy to correct its mistake at the earliest possible opportunity.

For queries or further information please contact the Copyright Team, First Floor, 9 Hills Road, Cambridge CB2 1GE.

OCR is part of the Cambridge Assessment Group; Cambridge Assessment is the brand name of University of Cambridge Local Examinations Syndicate (UCLES), which is itself a department of the University of Cambridge.

OCR

Oxford Cambridge and RSA

15 March – 15 May 2016

AS GCE FRENCH

F701 Speaking

ROLE PLAY B



- This Candidate's Sheet is to be handed to the candidate 20 minutes in advance.

INFORMATION FOR CANDIDATES

- You should use the time available to study the instructions overleaf. You may make notes on this sheet, which you should take into the examination room with you.
- When the test begins you will be asked:
 - (i) to carry out the task described overleaf
 - (ii) to discuss with the examiner the sub-topic which you have prepared. The topic must refer to France or a French-speaking country.
- You may **not** use a dictionary.

There are two sections to this examination:

- | | |
|--------------------------------|------------|
| A Role play (5–6 mins) | [30 Marks] |
| B Topic discussion (9–10 mins) | [30 Marks] |

- Candidates may bring into the examination a maximum of one side of A4 notes for the Topic discussion.

ROLE PLAY B – CANDIDATE’S SHEET

Note to the candidate: You should begin by asking the two questions. The task can then be completed in the order you prefer. You should base your replies on the English text, but sometimes you will need to use your imagination and initiative to react to the examiner’s comments and questions.

La Situation

Vous êtes en vacances chez des Français.

La Tâche

La fille va bientôt passer un an dans le Devon. Vous en discutez avec le père / la mère.

D’abord vous devez vous renseigner sur :

1 la raison pour laquelle sa fille va dans le Devon

2 sa façon de rester en contact

Vous avez trouvé un dépliant sur un magasin de téléphones portables. À l’aide du dépliant, vous donnerez des détails sur :

- le magasin Devon Phones
- son personnel
- les portables
- les contrats
- l’assurance
- le site web

Au cours de la conversation vous discuterez aussi :

- de l’importance des téléphones portables pour les jeunes
- des raisons pour lesquelles vous aimeriez ou vous n’aimeriez pas travailler dans un magasin

Devon Phones

Devon Phones is the region's newest technology shop, offering a wide range of telephones as well as tablets and games consoles.

The highly trained staff are enthusiastic and knowledgeable and can help you to choose the product that meets your needs. They never forget that the customer is king!



Whether you want a simple mobile to make calls and send texts, or a phone with internet and camera, Devon Phones has just what you need. The phones can be connected to any network.

The contracts last between 12 months and 2 years, and start at just £15 a month including 60 free minutes.

Europe-wide insurance costs just £3 extra per month and protects you if you lose or damage your handset, or if it is stolen. It must be taken out at the time of purchase.

Website gives details of the complete range, plus competitions and special offers.

**Copyright Information**

OCR is committed to seeking permission to reproduce all third-party content that it uses in its assessment materials. OCR has attempted to identify and contact all copyright holders whose work is used in this paper. To avoid the issue of disclosure of answer-related information to candidates, all copyright acknowledgements are reproduced in the OCR Copyright Acknowledgements Booklet. This is produced for each series of examinations and is freely available to download from our public website (www.ocr.org.uk) after the live examination series.

If OCR has unwittingly failed to correctly acknowledge or clear any third-party content in this assessment material, OCR will be happy to correct its mistake at the earliest possible opportunity.

For queries or further information please contact the Copyright Team, First Floor, 9 Hills Road, Cambridge CB2 1GE.

OCR is part of the Cambridge Assessment Group; Cambridge Assessment is the brand name of University of Cambridge Local Examinations Syndicate (UCLES), which is itself a department of the University of Cambridge.

OCR

Oxford Cambridge and RSA

15 March – 15 May 2016

AS GCE FRENCH

F701 Speaking

ROLE PLAY C



- This Candidate's Sheet is to be handed to the candidate 20 minutes in advance.

INFORMATION FOR CANDIDATES

- You should use the time available to study the instructions overleaf. You may make notes on this sheet, which you should take into the examination room with you.
- When the test begins you will be asked:
 - (i) to carry out the task described overleaf
 - (ii) to discuss with the examiner the sub-topic which you have prepared. The topic must refer to France or a French-speaking country.
- You may **not** use a dictionary.

There are two sections to this examination:

- | | |
|--------------------------------|------------|
| A Role play (5–6 mins) | [30 Marks] |
| B Topic discussion (9–10 mins) | [30 Marks] |

- Candidates may bring into the examination a maximum of one side of A4 notes for the Topic discussion.

ROLE PLAY C – CANDIDATE’S SHEET

Note to the candidate: You should begin by asking the two questions. The task can then be completed in the order you prefer. You should base your replies on the English text, but sometimes you will need to use your imagination and initiative to react to the examiner’s comments and questions.

La Situation

Vous habitez à Warminster. Une famille belge fait un séjour chez vous.

La Tâche

C’est leur première visite en Angleterre et ils voudraient faire des excursions. Vous en discutez avec la mère / le père de la famille.

D’abord vous devez vous renseigner sur :

- 1 la ville où habite la famille en Belgique**
- 2 le type d’excursion qui intéresserait la famille**

Vous pensez que la famille apprécierait une visite au musée de l’histoire de la famille. À l’aide du dépliant, vous donnerez des détails sur :

- le musée
- la vie au 18^e siècle
- la vie au 19^e siècle
- la vie au 20^e siècle
- la façon d’y aller
- les heures d’ouverture et les tarifs

Au cours de la conversation vous discuterez aussi :

- des raisons pour lesquelles, à votre avis, de telles visites sont populaires
- de ce que vous trouvez le plus important : la famille ou les amis

The Museum of Family Life

The museum describes family life over the last three hundred years. Using fascinating photographs, letters and recordings, you can see how the family has remained important in spite of immense social changes.

- **18th Century**

Many families worked together in the fields and children were seen as mini adults.

- **19th Century**

The Industrial Revolution saw families move away from the countryside. Children worked in factories, often in appalling conditions.

- **20th Century**

Families had to adapt to the changing role of women, and the new problems caused by an increasing divorce rate.



The museum is easily accessible from the A303 and has parking spaces for 150 cars. The nearest train station is just ten minutes' walk from the museum.

The museum is open every day between 10am and 4pm. Entry costs £7 for adults and £3.50 for children, but there are reductions for families and for admissions after 2pm.

**Copyright Information**

OCR is committed to seeking permission to reproduce all third-party content that it uses in its assessment materials. OCR has attempted to identify and contact all copyright holders whose work is used in this paper. To avoid the issue of disclosure of answer-related information to candidates, all copyright acknowledgements are reproduced in the OCR Copyright Acknowledgements Booklet. This is produced for each series of examinations and is freely available to download from our public website (www.ocr.org.uk) after the live examination series.

If OCR has unwittingly failed to correctly acknowledge or clear any third-party content in this assessment material, OCR will be happy to correct its mistake at the earliest possible opportunity.

For queries or further information please contact the Copyright Team, First Floor, 9 Hills Road, Cambridge CB2 1GE.

OCR is part of the Cambridge Assessment Group; Cambridge Assessment is the brand name of University of Cambridge Local Examinations Syndicate (UCLES), which is itself a department of the University of Cambridge.

OCR

Oxford Cambridge and RSA

15 March – 15 May 2016

AS GCE FRENCH

F701 Speaking

ROLE PLAY D



- This Candidate's Sheet is to be handed to the candidate 20 minutes in advance.

INFORMATION FOR CANDIDATES

- You should use the time available to study the instructions overleaf. You may make notes on this sheet, which you should take into the examination room with you.
- When the test begins you will be asked:
 - (i) to carry out the task described overleaf
 - (ii) to discuss with the examiner the sub-topic which you have prepared. The topic must refer to France or a French-speaking country.
- You may **not** use a dictionary.

There are two sections to this examination:

- A Role play (5–6 mins) [30 Marks]
- B Topic discussion (9–10 mins) [30 Marks]

- Candidates may bring into the examination a maximum of one side of A4 notes for the Topic discussion.

ROLE PLAY D – CANDIDATE’S SHEET

Note to the candidate: You should begin by asking the two questions. The task can then be completed in the order you prefer. You should base your replies on the English text, but sometimes you will need to use your imagination and initiative to react to the examiner’s comments and questions.

La Situation

Vous passez quelques jours chez des Français.

La Tâche

Vous discutez avec le père / la mère de la famille, et vous découvrez que sa fille voudrait travailler en Angleterre.

D’abord vous devez vous renseigner sur :

- 1 le genre de travail qui l’intéresse**
- 2 l’expérience professionnelle de sa fille**

Vous avez un dépliant sur l’hôtel Coulton, et vous pensez que cela pourrait l’intéresser. À l’aide du dépliant, vous donnerez des détails sur :

- l’hôtel Coulton et ses clients
- ce que l’hôtel recherche
- les tâches que fera le stagiaire
- le type de candidat désiré
- les entretiens
- le site web

Au cours de la conversation vous discuterez aussi :

- de votre expérience du monde du travail
- des avantages de faire un stage à l’étranger

The Coulton Hotel



The Coulton Hotel is a small, family-run hotel in the Norfolk countryside. With just 23 rooms, the hotel offers individual attention to guests – mostly business people during the week and couples of all ages at weekends.

The hotel is looking for a trainee to learn about all aspects of hotel work during a nine-month programme adapted to suit the successful candidate.

Answering the telephone, greeting guests at reception, cleaning rooms and waiting at table are among the tasks the trainee will undertake.

The ideal candidate will have some experience, perhaps in a restaurant or shop, and must be able to communicate in English and another language. A driving licence would be useful but is not essential.

Interviews will be in July, to start work in September. Travel expenses will be paid within 28 days.

See website for how to apply, pay rates and a virtual tour of the hotel.

**Copyright Information**

OCR is committed to seeking permission to reproduce all third-party content that it uses in its assessment materials. OCR has attempted to identify and contact all copyright holders whose work is used in this paper. To avoid the issue of disclosure of answer-related information to candidates, all copyright acknowledgements are reproduced in the OCR Copyright Acknowledgements Booklet. This is produced for each series of examinations and is freely available to download from our public website (www.ocr.org.uk) after the live examination series.

If OCR has unwittingly failed to correctly acknowledge or clear any third-party content in this assessment material, OCR will be happy to correct its mistake at the earliest possible opportunity.

For queries or further information please contact the Copyright Team, First Floor, 9 Hills Road, Cambridge CB2 1GE.

OCR is part of the Cambridge Assessment Group; Cambridge Assessment is the brand name of University of Cambridge Local Examinations Syndicate (UCLES), which is itself a department of the University of Cambridge.

OCR

Oxford Cambridge and RSA

15 March – 15 May 2016

AS GCE FRENCH

F701 Speaking

ROLE PLAY E



- This Candidate's Sheet is to be handed to the candidate 20 minutes in advance.

INFORMATION FOR CANDIDATES

- You should use the time available to study the instructions overleaf. You may make notes on this sheet, which you should take into the examination room with you.
- When the test begins you will be asked:
 - (i) to carry out the task described overleaf
 - (ii) to discuss with the examiner the sub-topic which you have prepared. The topic must refer to France or a French-speaking country.
- You may **not** use a dictionary.

There are two sections to this examination:

- | | |
|--------------------------------|------------|
| A Role play (5–6 mins) | [30 Marks] |
| B Topic discussion (9–10 mins) | [30 Marks] |

- Candidates may bring into the examination a maximum of one side of A4 notes for the Topic discussion.

ROLE PLAY E – CANDIDATE’S SHEET

Note to the candidate: You should begin by asking the two questions. The task can then be completed in the order you prefer. You should base your replies on the English text, but sometimes you will need to use your imagination and initiative to react to the examiner’s comments and questions.

La Situation

Vous êtes en vacances chez des Français.

La Tâche

La famille voudrait passer une semaine en Angleterre. Vous en discutez avec le père / la mère.

D’abord vous devez vous renseigner sur :

- 1 les dates prévues pour les vacances**
- 2 le type de vacances qui intéresserait la famille**

Vous avez trouvé un dépliant sur des vacances écologiques. À l’aide du dépliant, vous donnerez des détails sur :

- la société Ecoprojects
- les projets
- une journée typique
- l’hébergement
- les transports
- le site web

Au cours de la conversation vous discuterez aussi :

- des avantages de participer à un tel projet pendant les vacances
- de l’importance des vacances

Holidays that make a difference

Ecoprojects is a travel agency that specialises in holidays in England where the participants undertake an ecological project. It was established in 1998 by a young couple, and offers the chance to have fun whilst doing something useful.

Projects last between one and four weeks, and have included cleaning up a beach before the holiday season, creating a garden for patients at a hospital and repairing a play area for an inner-city school.



In a typical day, participants work from 10am to 4pm. The evening is free although activities are organised, such as sports competitions and parties for all the family.

Accommodation is in local hotels or spacious caravans, and participants can choose full board or cook for themselves.

Ecoprojects asks that all participants arrive by public transport. Bicycles will be provided for the duration of the holiday.

See website for details of all programmes currently available.

**Copyright Information**

OCR is committed to seeking permission to reproduce all third-party content that it uses in its assessment materials. OCR has attempted to identify and contact all copyright holders whose work is used in this paper. To avoid the issue of disclosure of answer-related information to candidates, all copyright acknowledgements are reproduced in the OCR Copyright Acknowledgements Booklet. This is produced for each series of examinations and is freely available to download from our public website (www.ocr.org.uk) after the live examination series.

If OCR has unwittingly failed to correctly acknowledge or clear any third-party content in this assessment material, OCR will be happy to correct its mistake at the earliest possible opportunity.

For queries or further information please contact the Copyright Team, First Floor, 9 Hills Road, Cambridge CB2 1GE.

OCR is part of the Cambridge Assessment Group; Cambridge Assessment is the brand name of University of Cambridge Local Examinations Syndicate (UCLES), which is itself a department of the University of Cambridge.

OCR

Oxford Cambridge and RSA

15 March – 15 May 2016

AS GCE FRENCH

F701 Speaking

ROLE PLAY F



- This Candidate's Sheet is to be handed to the candidate 20 minutes in advance.

INFORMATION FOR CANDIDATES

- You should use the time available to study the instructions overleaf. You may make notes on this sheet, which you should take into the examination room with you.
- When the test begins you will be asked:
 - (i) to carry out the task described overleaf
 - (ii) to discuss with the examiner the sub-topic which you have prepared. The topic must refer to France or a French-speaking country.
- You may **not** use a dictionary.

There are two sections to this examination:

- | | |
|--------------------------------|------------|
| A Role play (5–6 mins) | [30 Marks] |
| B Topic discussion (9–10 mins) | [30 Marks] |

- Candidates may bring into the examination a maximum of one side of A4 notes for the Topic discussion.

ROLE PLAY F – CANDIDATE’S SHEET

Note to the candidate: You should begin by asking the two questions. The task can then be completed in the order you prefer. You should base your replies on the English text, but sometimes you will need to use your imagination and initiative to react to the examiner’s comments and questions.

La Situation

Vous habitez à Buckingham. Une famille française fait un séjour chez vous.

La Tâche

La famille voudrait faire des visites. Vous en discutez avec la mère / le père de la famille.

D’abord vous devez vous renseigner sur :

1 ce que la mère / le père a déjà vu dans la région

2 les intérêts de la famille

Vous pensez que la famille apprécierait le week-end de la mode à Buckingham. À l’aide d’un dépliant, vous donnerez des détails sur :

- le week-end de la mode
- les événements spéciaux
- ce qu’il y a pour les enfants
- les tarifs
- les informations pratiques
- le site web

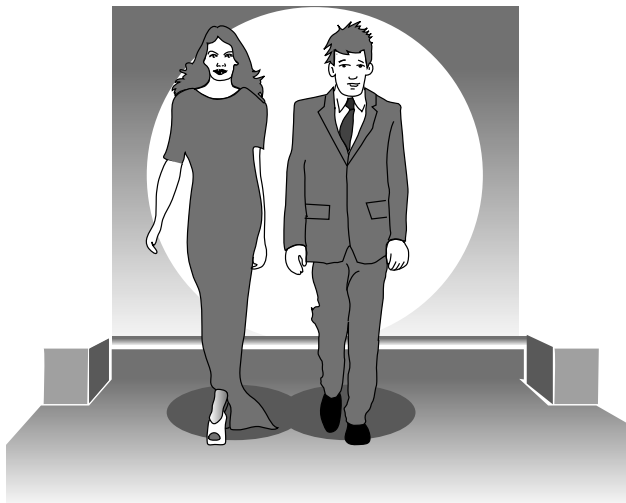
Au cours de la conversation vous discuterez aussi :

- des raisons pour lesquelles, à votre avis, de tels événements sont populaires
- de ce que vous pensez de la mode

Buckingham Fashion Weekend

This spectacular event, which will take place during the last weekend of July, presents a unique opportunity for young British designers to show and sell their original creations.

There are a number of special events. On Friday evening, there will be a fashion parade with the latest ideas for men and women. On Sunday, some of the most popular clothes will be on sale at the Town Hall.



For Children

Variety of activities for 5–12 year olds

You can paint your own T-shirt or hat,
or have a go at making – and eating –
your own ice cream

Crèche for under-5s with qualified staff

Weekend ticket costs £10 for adults and £6 for children
Reduced rates for seniors and unemployed

Please leave your car at home as several parts of the town centre will be closed

Visit website to see profiles of participants, to download a programme and to buy tickets

**Copyright Information**

OCR is committed to seeking permission to reproduce all third-party content that it uses in its assessment materials. OCR has attempted to identify and contact all copyright holders whose work is used in this paper. To avoid the issue of disclosure of answer-related information to candidates, all copyright acknowledgements are reproduced in the OCR Copyright Acknowledgements Booklet. This is produced for each series of examinations and is freely available to download from our public website (www.ocr.org.uk) after the live examination series.

If OCR has unwittingly failed to correctly acknowledge or clear any third-party content in this assessment material, OCR will be happy to correct its mistake at the earliest possible opportunity.

For queries or further information please contact the Copyright Team, First Floor, 9 Hills Road, Cambridge CB2 1GE.

OCR is part of the Cambridge Assessment Group; Cambridge Assessment is the brand name of University of Cambridge Local Examinations Syndicate (UCLES), which is itself a department of the University of Cambridge.