



ADVANCED SUBSIDIARY GCE
GEOLOGY
 Global Tectonics

F791

Candidates answer on the Question Paper

OCR Supplied Materials:
 None

Other Materials Required:

- Ruler (cm/mm)

Wednesday 13 January 2010
Afternoon
Duration: 1 hour




Candidate Forename		Candidate Surname	
--------------------	--	-------------------	--

Centre Number						Candidate Number				
---------------	--	--	--	--	--	------------------	--	--	--	--

INSTRUCTIONS TO CANDIDATES

- Write your name clearly in capital letters, your Centre Number and Candidate Number in the boxes above.
- Use black ink. Pencil may be used for graphs and diagrams only.
- Read each question carefully and make sure that you know what you have to do before starting your answer.
- Answer **all** the questions.
- Do **not** write in the bar codes.
- Write your answer to each question in the space provided, however additional paper may be used if necessary.

INFORMATION FOR CANDIDATES

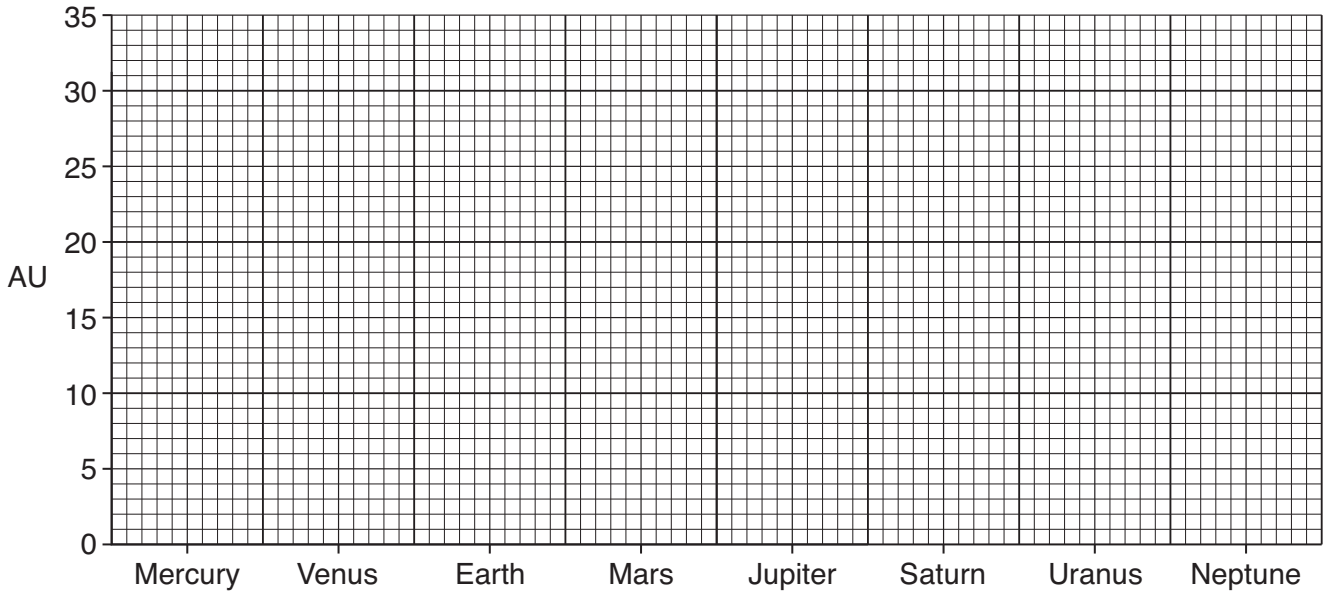
- The number of marks is given in brackets [] at the end of each question or part question.
- The total number of marks for this paper is **60**.
-  Where you see this icon you will be awarded a mark for the quality of written communication in your answer.
- You are advised to show all the steps in any calculations.
- This document consists of **12** pages. Any blank pages are indicated.

Answer **all** the questions.

1 (a) The data table below shows the distance from the Sun for each planet in the solar system.

planet	Mercury	Venus	Earth	Mars	Jupiter	Saturn	Uranus	Neptune
distance from the Sun (AU) (Astronomical Units)	0.4	0.7	1.0	1.5	5.2	9.5	19.2	30.1

(i) Plot the data in the table to show the distance of each planet from the Sun.



[2]

(ii) The asteroid belt occurs between the orbits of two planets. Name **both** planets.

..... [1]

(b) Some meteorites are thought to originate from the asteroid belt.

(i) Name **two** types of meteorite.

meteorite 1

meteorite 2 [2]

(ii) For each type of meteorite, describe the information it provides for the composition of a specific layer of the Earth.

meteorite 1

.....

.....

.....

meteorite 2

.....

.....

..... [4]

(c) Describe **two** types of evidence for meteorite impacts on Earth.

.....

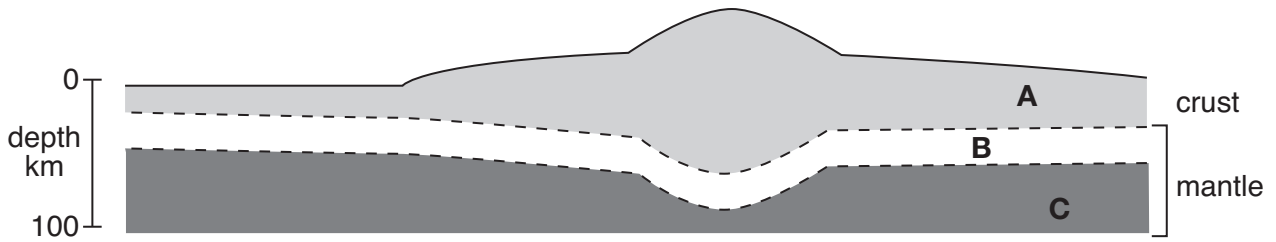
.....

.....

..... [2]

[Total: 11]

- 2 (a) The diagram below shows a simplified cross-section through the crust and part of the mantle.



- (i) Name the part of the Earth that consists of layers **A** and **B**.



In your answer, you should use an appropriate term, spelled correctly.

..... [1]

- (ii) Describe the physical state of this layer.

..... [1]

- (iii) Describe the physical state of layer **C**.

..... [1]

- (iv) Name the part of the Earth that consists of layer **C**.

..... [1]

- (b) (i) Label the Moho on the diagram above. [1]

- (ii) Describe how the Moho is identified using seismic waves. You may draw a diagram to help your answer.

.....

 [2]

- (c) Complete the table below showing the characteristics of crust from oceanic and continental areas.

	oceanic areas	continental areas
average composition		
average density (g/cm ³)		
age range (Ma)		
average thickness (km)		

[4]

- (d) Choose the correct feature from the list below to match the definition in the table.

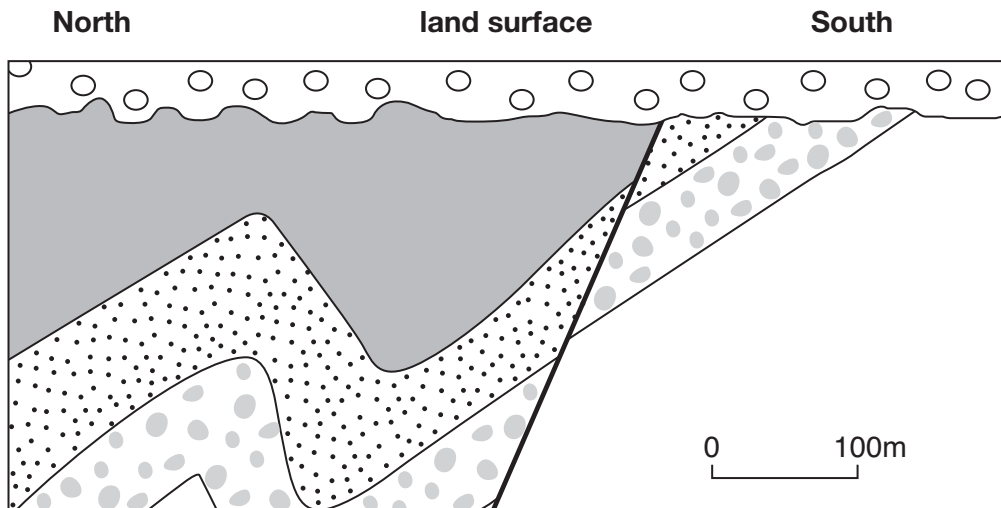
abyssal plain deep sea trench continental shelf
 continental slope mid-ocean ridge seamount

definition	feature
deep ocean basin with a depth of between 3 and 5 km	
line of volcanic mountains rising 2 to 3 km above the ocean basin – has an axial rift valley	
very deep, linear valley in the ocean parallel to fold mountains and island arcs	

[3]

[Total: 14]

3 Below is a sketch cross-section of a cliff outcrop.



(a) (i) Fully describe the northern fold.

.....

.....

.....

..... [2]

(ii) Draw and label the axial planes on both folds. [1]

(b) (i) Name the type of fault shown on the cross-section.

..... [1]

(ii) What kind of stress caused the fault?

..... [1]

- (iii) With the aid of a diagram, name and describe a feature that can often be found along fault planes.



In your answer, you should use an appropriate term, spelled correctly.

name of feature

description

.....

.....

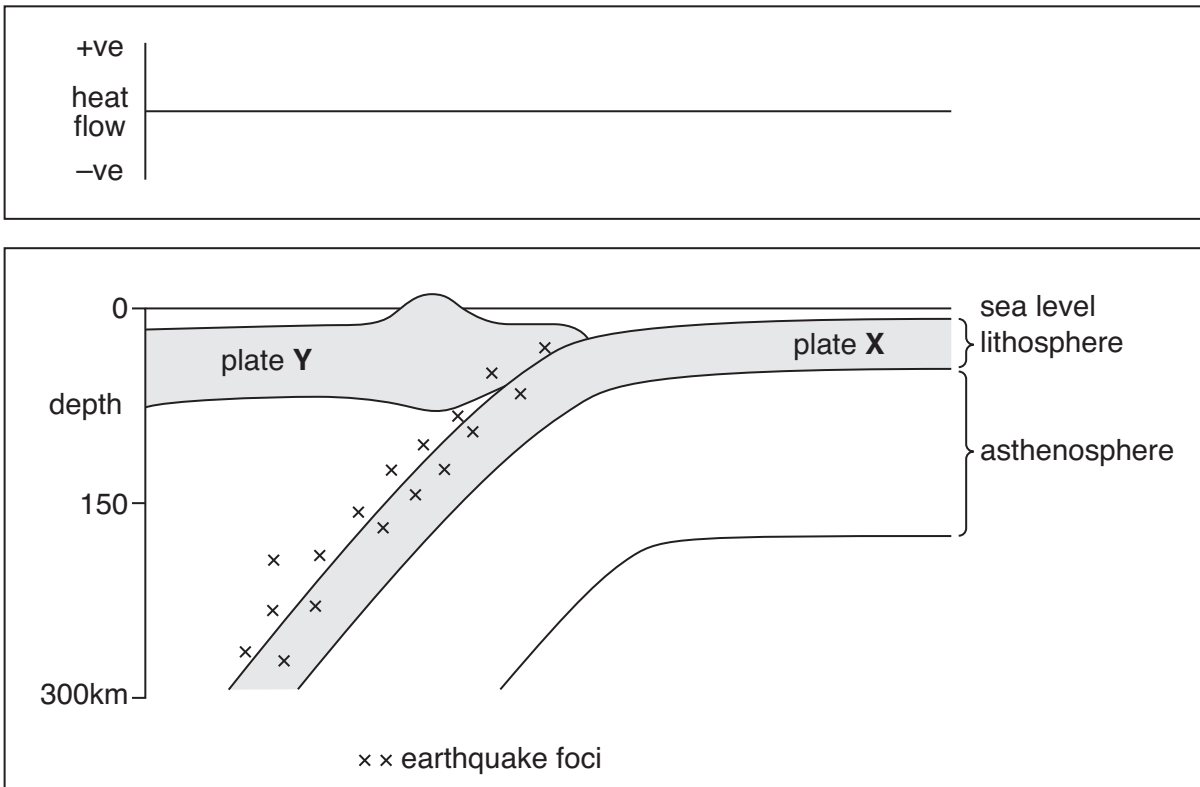
..... [3]

- (c) (i) Label the unconformity on the cross-section. [1]

- (ii) Describe fully the order of events shown in the cross-section (start with the oldest).
.....
.....
.....
.....
.....
.....
.....
..... [4]

[Total: 13]

4 The diagram below is a cross-section through a plate margin.



(a) (i) On the diagram shade and label:

- the Benioff zone
- an island arc.

[2]

(ii) Draw arrows to show the direction of movement of plates X and Y.

[1]

(iii) On the diagram draw and label the path of rising magma which forms active volcanoes. [1]

(iv) Name the type of plate margin shown in the diagram.

..... [1]

(b) (i) Draw the variation in heat flow across the plate margin on the axis above the plate diagram. [1]

(ii) Explain the pattern of heat flow.

.....

 [2]

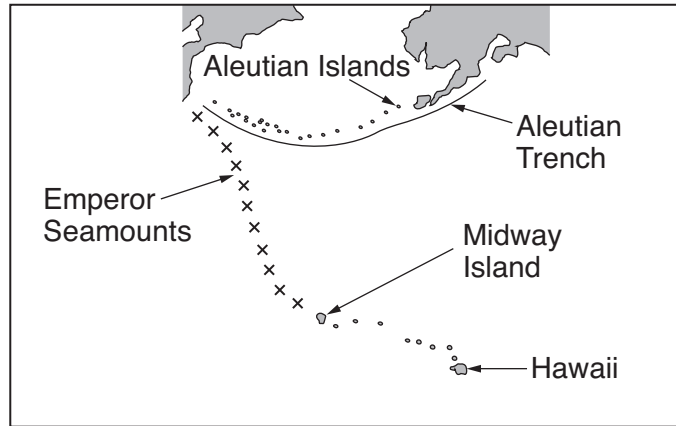
(c) (i) Give the name of an oceanic plate.

..... [1]

(ii) Give the name of a continental plate.

..... [1]

(d) The map below shows the Hawaiian and Aleutian island chains.



(i) Hawaii is an example of a *hot spot*. Explain what this term means.

.....
..... [1]

(ii) Explain how the pattern of islands and seamounts was produced by plate movement over the hot spot.

.....
.....
.....
.....
.....
.....
..... [3]

[Total: 14]

PLEASE DO NOT WRITE ON THIS PAGE



Copyright Information

OCR is committed to seeking permission to reproduce all third-party content that it uses in its assessment materials. OCR has attempted to identify and contact all copyright holders whose work is used in this paper. To avoid the issue of disclosure of answer-related information to candidates, all copyright acknowledgements are reproduced in the OCR Copyright Acknowledgements Booklet. This is produced for each series of examinations, is given to all schools that receive assessment material and is freely available to download from our public website (www.ocr.org.uk) after the live examination series.

If OCR has unwittingly failed to correctly acknowledge or clear any third-party content in this assessment material, OCR will be happy to correct its mistake at the earliest possible opportunity.

For queries or further information please contact the Copyright Team, First Floor, 9 Hills Road, Cambridge CB2 1GE.

OCR is part of the Cambridge Assessment Group; Cambridge Assessment is the brand name of University of Cambridge Local Examinations Syndicate (UCLES), which is itself a department of the University of Cambridge.