

CAMBRIDGE TECHNICALS LEVEL 2 (2016)

Examiners' report

HEALTH AND SOCIAL CARE

05890, 05880, 05881

Unit 1 Summer 2023 series

Contents

Introduction	4
Unit 1 series overview	5
Learning outcome 1: Questions 1 - 8	5
Learning outcome 2: Questions 9 - 14	5
Learning outcome 3: Questions 15 - 20	5
Learning outcome 4: Questions 21 - 28	6
Learning outcome 5: Questions 29 - 34	6
Learning outcome 6: Questions 35 - 40	6
Appendix 1 Questions	7
Question 1	7
Question 2	7
Question 3	8
Question 4	8
Question 5	9
Question 6	9
Question 7	10
Question 8	10
Question 9	11
Question 10	11
Question 11	12
Question 12	12
Question 13	13
Question 14	13
Question 15	14
Question 16	14
Question 17	15
Question 18	15
Question 19	16
Question 20	16
Question 21	17
Question 22	17
Question 23	18
Question 24	18
Question 25	19

Question 26	19
Question 27	20
Question 28	20
Question 29	21
Question 30	22
Question 31	23
Question 32	24
Question 33	25
Question 34	25
Question 35	26
Question 36	26
Question 37	27
Question 38	27
Question 39	28
Question 40	28

Introduction

Our examiners' reports are produced to offer constructive feedback on candidates' performance in the examinations. They provide useful guidance for future candidates.

The reports will include a general commentary on candidates' performance, identify technical aspects examined in the questions and highlight good performance and where performance could be improved. The reports will also explain aspects which caused difficulty and why the difficulties arose, whether through a lack of knowledge, poor examination technique, or any other identifiable and explainable reason.

Where overall performance on a question/question part was considered good, with no particular areas to highlight, these questions have not been included in the report.

A full copy of the question paper and the mark scheme can be downloaded from OCR.

Would you prefer a Word version?

Did you know that you can save this PDF as a Word file using Acrobat Professional?

Simply click on **File > Export to** and select **Microsoft Word**

(If you have opened this PDF in your browser you will need to save it first. Simply right click anywhere on the page and select **Save as . . .** to save the PDF. Then open the PDF in Acrobat Professional.)

If you do not have access to Acrobat Professional there are a number of **free** applications available that will also convert PDF to Word (search for PDF to Word converter).

Unit 1 series overview

This was the tenth series of assessment for this unit. The unit contains a large breadth of knowledge and, as is to be expected, candidates performed better on some Learning Outcomes (LOs) than on other LOs. Similarly, even within each LO candidate performance varied across the range of questions which assessed that LO.

Candidates on average performed best on those questions which assessed LO1 and least well on those questions which were targeted at LO4 and LO6.

Candidates who did well on this paper generally:	Candidates who did less well on this paper generally:
<ul style="list-style-type: none"> performed well across each of the six Learning Outcomes. 	<ul style="list-style-type: none"> displayed gaps in their knowledge in relation to individual Learning Outcomes or across the unit specification content.

Learning outcome 1: Questions 1 - 8

This LO requires the candidates to know the principles of maintaining health, safety and security and to know basic emergency procedures. Performance on this LO in this series was the highest across all six LOs.

The majority of candidates selected the correct response to Questions 1, 7 and 8. With Question 1, which required the correct identification of a health care setting, being the best answered.

Question 6 had lowest outcomes in this LO. This question required candidates to identify the second stage of a risk assessment.

Learning outcome 2: Questions 9 - 14

This LO covers the principles of equality and diversity in health care, social care and childcare environments. Candidates performed well on these questions.

The majority of candidates selected the correct response to Question 9 which required knowledge of actions which could be challenged as part of an organisational bullying policy.

Question 12 (actions an individual could take to challenge discriminatory practice) and Question 13 (valuing diversity in a care home setting) were the least well answered questions within this LO.

Learning outcome 3: Questions 15 - 20

LO3 covers the principles of individual rights and the key features of a person-centred approach. This section was again among the least well answered sections.

Question 16 proved to be the most challenging question in this LO and the exam, with many students not able to correctly identify areas which the National Institute for Health and Care Excellence (NICE) would consider advising on.

Question 19 (powers linked to the Equality and Human Rights Commission, EHRC) had the highest outcome in this section, with most candidates answering correctly.

Learning outcome 4: Questions 21 - 28

LO4 requires the candidates to know key facts about safeguarding. Performance on this LO in this series was among the lowest scoring over all six LOs.

The majority of candidates selected the correct response to Questions 23 and 26. These questions respectively related to meeting individual basic needs and the terminology used to describe crimes committed against a person due to their religion.

The least well answered question was Question 25, which required candidates to name the guidance on safeguarding from the Department of Health.

Assessment for learning



Tutors could write down on separate cards each of the six principles that underpin the safeguarding of adults.

1. Empowerment
2. Prevention
3. Proportionality
4. Protection
5. Partnership
6. Accountability

Students could be tasked with working in pairs and writing down a definition of each principle and how it relates to safeguarding. Each pair could then discuss their responses with their peers. A useful resource for this question is in Unit 1 delivery guide.

Statement of Government policy on adult safeguarding: [Department of Health](#)

Examples of how the six principles that underpin safeguarding can be applied, including the benefits of doing so.

Learning outcome 5: Questions 29 - 34

LO5 covers aspects of anatomy and physiology. Answers in this section were strong, with the exception of Question 29, where there is a noticeable drop in performance.

Question 29 required students to identify the body system that produces hormones and regulates growth and metabolism.

Questions 30 (identifying the skeleton as a body part) was correctly answered by the majority of students.

Learning outcome 6: Questions 35 - 40

The sixth and final LO requires the candidates to know the principles of effective communication. Candidate performance within this section was the weakest across all the LOs.

Question 37 (description of a prescription) was the strongest performing question in this section.

Question 38 required candidates to select a method to help overcome barriers to communication, the majority of candidates did not answer this question correctly.

Question 39 was the second least well answered question within the exam. This question required candidates to identify the second stage of the communication cycle.

Appendix 1 Questions

Question 1

A dentist is which type of setting?

A Childcare

B Healthcare

C Residential care

D Social care

[1]

Question 2

In first aid, which of the following is an aspect of DRAB?

A Age

B Breathing

C Dress

D Rights

[1]

Question 3

Which of the following is a security measure?

- A
- B
- C
- D

[1]

Question 4

Hair washing helps prevent which of the following?

- A
- B
- C
- D

[1]

Question 5

Which of the following is an example of personal protective clothing (PPE)?

A Clean clothes

B Disposable face masks

C Nail polish

D Waterproof dressings

[1]

Question 6

What is the **second** stage of a risk assessment?

A Assess who may be harmed and how

B Evaluate the risk/likelihood of risk

C Look for hazards

D Review the risk assessment and update if necessary

[1]

Question 7

Which of these practices is the **best** one to follow for good food hygiene?

- A Washing hands after food is cooked
- B Washing hands after handling food
- C Washing hands before **and** after handling food
- D Washing hands before handling food

[1]

Question 8

What does this safety sign mean?



- A Assembly point
- B Clinical waste
- C No entry/prohibited access
- D No smoking

[1]

Question 9

Which of the following could be challenged using an organisational bullying policy?

A Discriminatory practice

B Primary survey

C Registering services

D Value for money

[1]

Question 10

Which of these laws makes provision for protected characteristics?

A The Children Act

B The Equality Act

C The Health and Safety at Work Act

D The Safeguarding Vulnerable Groups Act

[1]

Question 11

How could care home staff show that they value age as an aspect of diversity?

- A Arrange activities suitable for residents who have a sensory impairment
- B Arrange activities that appeal to older residents only
- C Ask all residents what activities they would like the care home to arrange
- D Ask residents to suggest activities suitable for different cultures and beliefs

[1]

Question 12

What could an **individual** do to challenge discriminatory practice in an organisation?

- A Issue a 'warning notice'
- B Make reasonable adjustments
- C Promote independence
- D Take legal advice/take to court

[1]

Question 13

Which of the following is an aspect of diversity that should be valued in care environments?

A Access to goods

B Behaviour changes

C Family structure

D Services and housing

[1]

Question 14

The Equality Act gives the right to do which of the following in public?

A Breastfeed

B Collect personal belongings

C Prosecute

D Tailgate

[1]

Question 15

Which of these organisations supports individuals to take cases to court?

A Department of Health

B Disclosure and Barring Service (DBS)

C Equality and Human Rights Commission (EHRC)

D National Institute for Health and Care Excellence (NICE)

[1]

Question 16

The National Institute for Health and Care Excellence (NICE) considers which of the following?

A Whether an individual's money is being used without their permission

B Whether an organisation is following a whistleblowing policy

C Whether a treatment is value for money

D Whether care planning is meeting an individual's unique needs

[1]

Question 17

Which of the following is a description of person centred planning?

A Being patronising

B Make a positive contribution

C Sense of humour

D The individual is at the core

[1]

Question 18

Promoting individual rights and beliefs is an example of which of the following?

A Childcare values of care

B Protected characteristics

C Supporting legislation

D Values of care

[1]

Question 19

The Equality and Human Rights Commission (EHRC) has powers to force organisations to do which of the following?

A Identify how hazardous substances are handled

B Improve survival rates

C Meet their equality responsibilities

D Write care plans in the first person

[1]

Question 20

Which of the following is identified in The Care Certificate as a person-centred value?

A Practice

B Privacy

C Prosecute

D Protect

[1]

Question 21

Which of these organisations helps employers to make safe recruitment decisions?

A Department for Education

B Disclosure and Barring Service (DBS)

C Health and Safety Executive (HSE)

D Skills for Care

[1]

Question 22

Which statement best describes the term 'safeguarding adults'?

A Encouraging adults to plan for themselves

B Keeping an adult safe from harm

C Supporting an adult by meeting their basic needs

D Working together with an adult

[1]

Question 23

Failing to meet an individual's basic needs is an example of which of the following?

- A Choice
- B Neglect
- C Self-neglect
- D Whistleblowing

[1]

Question 24

Which of the following is one of the 'Every Child Matters' outcomes in the Children Act?

- A Control care
- B Enjoy and achieve
- C Right to life
- D Value for money

[1]

Question 25

What is the name of the Department of Health guidance on safeguarding?

A 'Active listening'

B 'Do not judge'

C 'Duty to report'

D 'No secrets'

[1]

Question 26

What is the name for a crime committed against a person because of their religion?

A Active crime

B Behavioural crime

C Hate crime

D Sensory crime

[1]

Question 27

Which of the following may be an unexplained **injury**?

A Broken bones

B Fear of certain people

C Sexualised behaviour

D Underweight

[1]

Question 28

Which of the following individuals lack mental capacity?

A Care home resident

B Comatose patient

C Individual with sensory impairment

D Looked after children

[1]

Question 29

Which body system produces hormones that regulate the body's growth and metabolism?

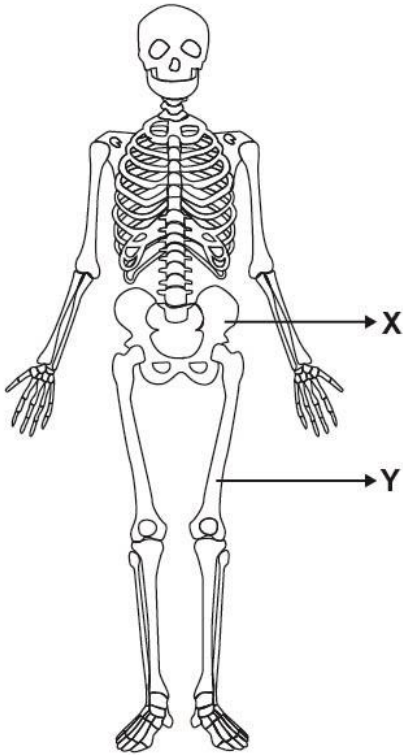
- A
- B
- C
- D

[1]

Question 30

Fig.1 shows a key part of the body

What key part of the body is shown in Fig.1?



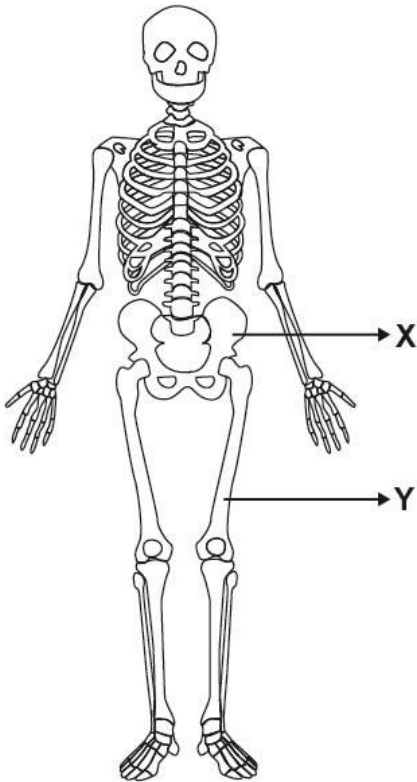
- A Intestines
- B Liver
- C Pancreas
- D Skeleton

[1]

Question 31

Fig.1 shows a key part of the body

What is part **X** in Fig.1?



A Femur

B Pelvis

C Skull

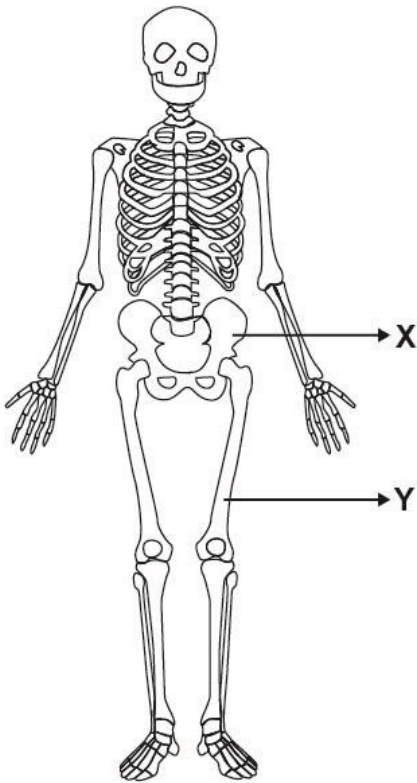
D Sternum

[1]

Question 32

Fig.1 shows a key part of the body

What is part Y in Fig.1?



- A
- B
- C
- D

[1]

Question 33

What could the results of peak flow measurements indicate?

- A Asthma
- B Autism
- C Cirrhosis
- D Diabetes

[1]

Question 34

What is the function of the nervous system?

- A To produce hormones that regulate the body's growth and development
- B To remove waste products from the blood
- C To support the movements and organs of the body
- D To transmit signals between different parts of the body

[1]

Question 35

Which type of communication is body language?

- A Non-verbal
- B Special
- C Verbal
- D Visual

[1]

Question 36

Jargon is a type of which barrier to communication?

- A Autism
- B Deafness
- C Dementia
- D Vocabulary

[1]

Question 37

Which of the following communicates in writing the **medication** a patient requires?

A Assessment records

B Prescription

C Temperature chart

D Test results

[1]

Question 38

Which of the following helps to overcome barriers to communication?

A Being patronising

B Inappropriate body language

C Sense of humour

D Specialist terminology

[1]

Question 39

What is the **second** stage in the communication cycle?

A Acknowledge

B Inform

C Invite

D Listen

[1]

Question 40

Which of the following is a specialist method of communication?

A Care plan

B Individual learning plan

C PECS (picture exchange communication system)

D SOLER principle

[1]

Supporting you

Teach Cambridge

Make sure you visit our secure website [Teach Cambridge](#) to find the full range of resources and support for the subjects you teach. This includes secure materials such as set assignments and exemplars, online and on-demand training.

Don't have access? If your school or college teaches any OCR qualifications, please contact your exams officer. You can [forward them this link](#) to help get you started.

Reviews of marking

If any of your students' results are not as expected, you may wish to consider one of our post-results services. For full information about the options available visit the [OCR website](#).

Keep up-to-date

We send a monthly bulletin to tell you about important updates. You can also sign up for your subject specific updates. If you haven't already, [sign up here](#).

OCR Professional Development

Attend one of our popular CPD courses to hear directly from a senior assessor or drop in to a Q&A session. Most of our courses are delivered live via an online platform, so you can attend from any location.

Please find details for all our courses for your subject on **Teach Cambridge**. You'll also find links to our online courses on NEA marking and support.

Signed up for ExamBuilder?

ExamBuilder is the question builder platform for a range of our GCSE, A Level, Cambridge Nationals and Cambridge Technicals qualifications. [Find out more](#).

ExamBuilder is **free for all OCR centres** with an Interchange account and gives you unlimited users per centre. We need an [Interchange](#) username to validate the identity of your centre's first user account for ExamBuilder.

If you do not have an Interchange account please contact your centre administrator (usually the Exams Officer) to request a username, or nominate an existing Interchange user in your department.

Need to get in touch?

If you ever have any questions about OCR qualifications or services (including administration, logistics and teaching) please feel free to get in touch with our customer support centre.

Call us on
01223 553998

Alternatively, you can email us on
support@ocr.org.uk

For more information visit

 **ocr.org.uk/qualifications/resource-finder**

 **ocr.org.uk**

 **facebook.com/ocrexams**

 **twitter.com/ocrexams**

 **instagram.com/ocrexaminations**

 **linkedin.com/company/ocr**

 **youtube.com/ocrexams**

We really value your feedback

Click to send us an autogenerated email about this resource. Add comments if you want to. Let us know how we can improve this resource or what else you need. Your email address will not be used or shared for any marketing purposes.



I like this



I dislike this

Please note – web links are correct at date of publication but other websites may change over time. If you have any problems with a link you may want to navigate to that organisation's website for a direct search.



OCR is part of Cambridge University Press & Assessment, a department of the University of Cambridge.

For staff training purposes and as part of our quality assurance programme your call may be recorded or monitored. © OCR 2023 Oxford Cambridge and RSA Examinations is a Company Limited by Guarantee. Registered in England. Registered office The Triangle Building, Shaftesbury Road, Cambridge, CB2 8EA. Registered company number 3484466. OCR is an exempt charity.

OCR operates academic and vocational qualifications regulated by Ofqual, Qualifications Wales and CCEA as listed in their qualifications registers including A Levels, GCSEs, Cambridge Technicals and Cambridge Nationals.

OCR provides resources to help you deliver our qualifications. These resources do not represent any particular teaching method we expect you to use. We update our resources regularly and aim to make sure content is accurate but please check the OCR website so that you have the most up to date version. OCR cannot be held responsible for any errors or omissions in these resources.

Though we make every effort to check our resources, there may be contradictions between published support and the specification, so it is important that you always use information in the latest specification. We indicate any specification changes within the document itself, change the version number and provide a summary of the changes. If you do notice a discrepancy between the specification and a resource, please [contact us](#).

You can copy and distribute this resource freely if you keep the OCR logo and this small print intact and you acknowledge OCR as the originator of the resource.

OCR acknowledges the use of the following content: N/A

Whether you already offer OCR qualifications, are new to OCR or are thinking about switching, you can request more information using our [Expression of Interest form](#).

Please [get in touch](#) if you want to discuss the accessibility of resources we offer to support you in delivering our qualifications.